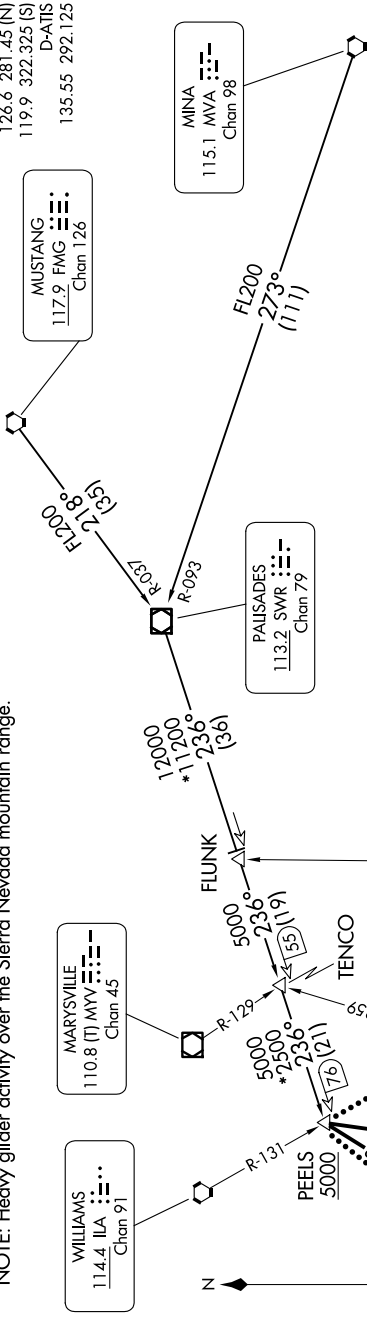


PALISADES ONE ARRIVAL

SW-2, 15 MAY 2025 to 12 JUN 2025

RADAR required.

NOTE: Heavy glider activity over the Sierra Nevada mountain range.



ARRIVAL ROUTE DESCRIPTION

MINA TRANSITION (MVA.SWR1): From over MVA VORTAC on MVA R-273 and SWR R-093 to SWR VOR/DME, then on SWR R-236 to PEELS INT. Thence. . . .

MUSTANG TRANSITION (FMG.SWR1): From over FMG VORTAC on FMG R-218 and SWR R-037 to SWR VOR/DME, then on SWR R-236 to PEELS INT. Thence. . . .

LANDING RUNWAYS 3L/R: From over PEELS on heading 200°. Expect RADAR vectors to final approach course.

LANDING RUNWAYS 21L/R: From over PEELS on heading 175°. Expect RADAR vectors to final approach course.

LOST COMMUNICATIONS

RUNWAY 3L: From over PEELS proceed to SGD VORTAC. Expect ILS or LOC RWY 3L approach.

RUNWAY 21R: From over PEELS proceed to SAC VORTAC. Expect ILS or LOC RWY 21L approach.

SW-2, 15 MAY 2025 to 12 JUN 2025

NOTE: Chart not to scale.