

WAAS CH <b>53337</b> <b>W23A</b>	APP CRS <b>231°</b>	Rwy Idg TDZE Apt Elev	<b>5300</b> <b>3840</b> <b>3858</b>
--	------------------------	-----------------------------	---

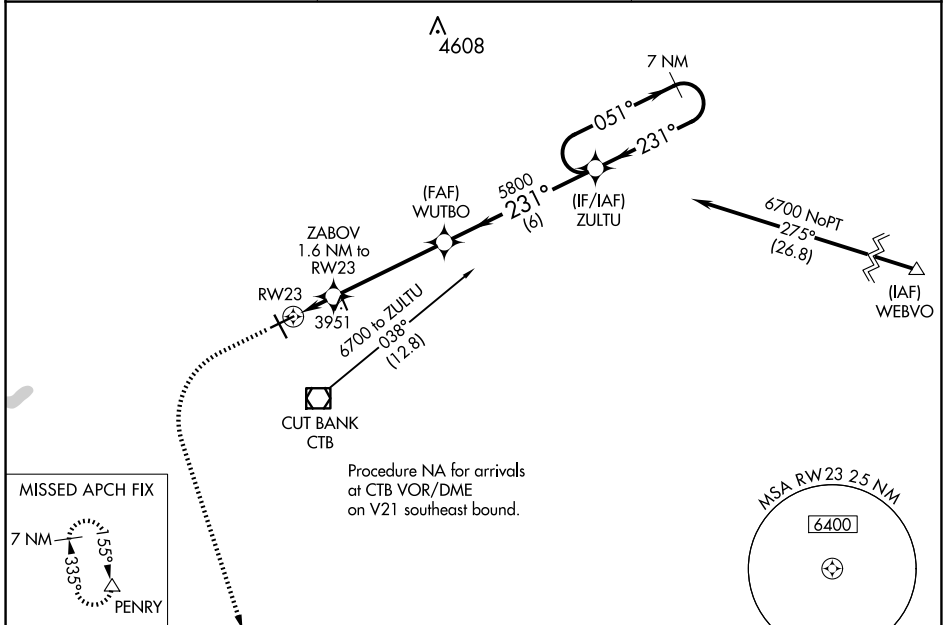
# RNAV (GPS) RWY 23

CUT BANK INTL (CTB)

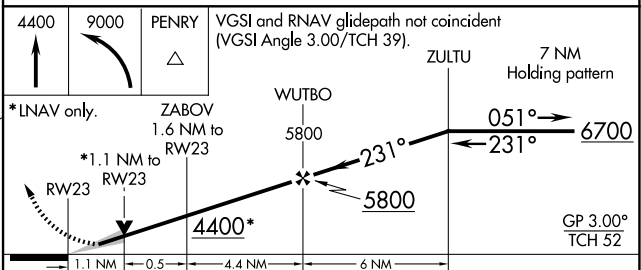
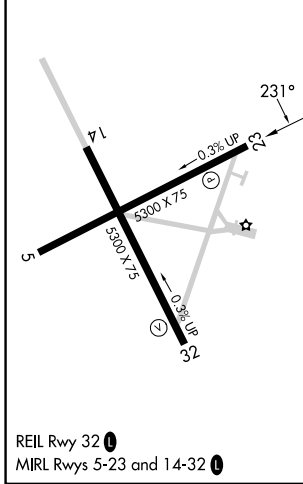
**⚠** For uncompensated Baro-VNAV systems, LNAV/VNAV NA below -25°C (-13°F) or above 51°C (124°F).  
**⚠** -29°C DME/DME RNP-0.3 NA.

MISSED APPROACH: Climb to 4400 then climbing left turn to 9000 direct PENRY and hold.

ASOS <b>119.025</b>	SALT LAKE CITY CENTER <b>133.4 285.4</b>	UNICOM <b>123.0 (CTAF) 0</b>
------------------------	---	---------------------------------



ELEV <b>3858</b>	TDZE <b>3840</b>
------------------	------------------



CATEGORY	A	B	C	D
LPV DA		4040-1	200 (200-1)	
LNAV/VNAV DA		4090-1	250 (300-1)	
LNAV MDA		4220-1	380 (400-1)	
<b>CIRCLING</b>	4280-1 422 (500-1)	4320-1 462 (500-1)	4400-1½ 542 (600-1½)	4620-2½ 762 (800-2½)

NW-1, 15 MAY 2025 to 12 JUN 2025

NW-1, 15 MAY 2025 to 12 JUN 2025