

RNAV (GPS) RWY 26

WAAS CH 95990 W26A	APCH CRS 259°	Rwy Idg TDZE Arprt Elev 9503 -46 -42
--	-------------------------	--

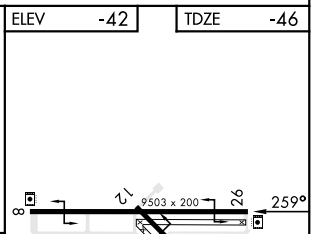
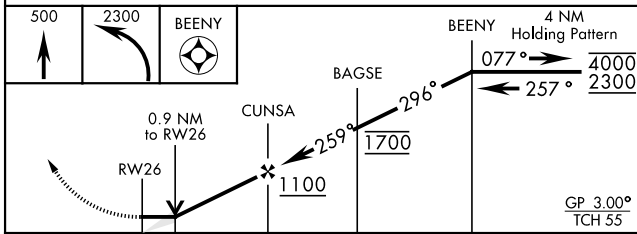
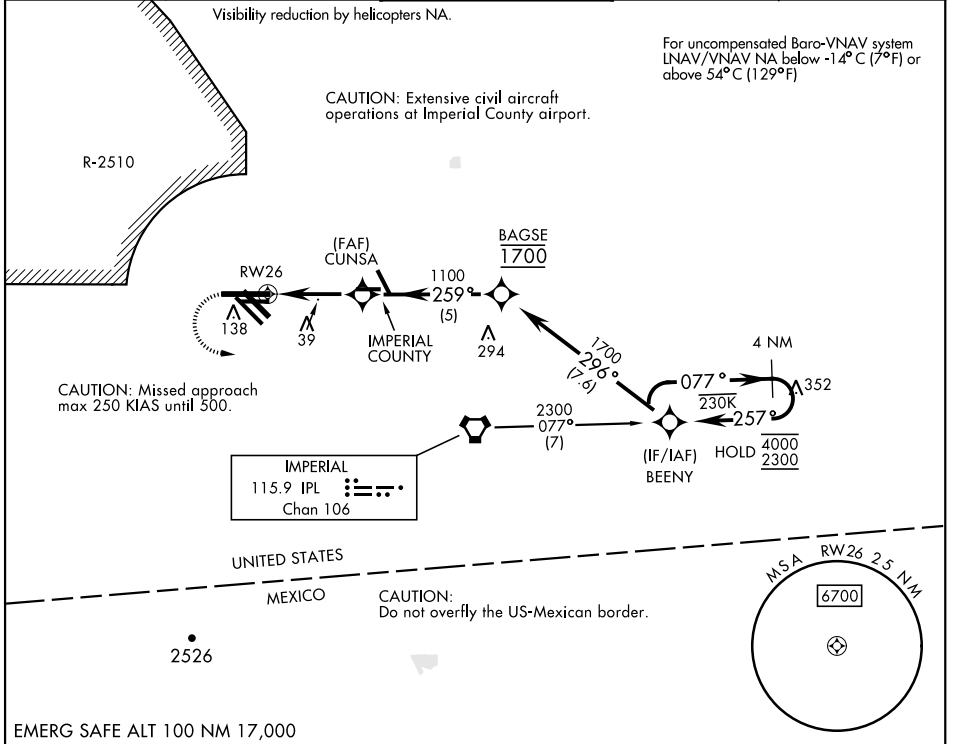
[USN]

EL CENTRO NAF (VRACIU FLD) (KNJK)

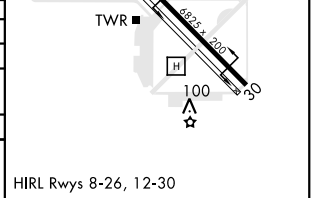
RNP APCH
 ▼ Circling to Rwy 30 NA at night.
 When tower closed, increase visibility to 1 mile.

MISSED APPROACH: Climb to 500, then climbing left turn to 2300 direct BEENY and hold.

ATIS ★ 269.275	APP CON/DEP CON 128.55 292.2	TOWER ★ 119.1 360.2	GND CON 121.9 254.35	CLNC DEL 340.2
--------------------------	--	-------------------------------	--------------------------------	--------------------------



CATEGORY	A	B	C	D
LPV DA	206-¾	252	(300-¾)	
LNAV/VNAV DA	204-¾	250	(300-¾)	214-¾ 260 (300-¾)
LNAV MDA	300-1	346	(400-1)	
C CIRCLING	480-1 522 (600-1)		480-1½ 522 (600-1½)	520-2 562 (600-2)



RNAV (GPS) RWY 26

SW-3, 15 MAY 2025 to 12 JUN 2025

SW-3, 15 MAY 2025 to 12 JUN 2025