

CHERRY POINT, NORTH CAROLINA

# HI-TACAN Y RWY 32L

TACAN NKT Chan <b>75</b>	APCH CRS <b>334°</b>	Rwy ldg TDZE <b>7551</b> Arpt Elev <b>26</b> <b>29</b>
--------------------------	----------------------	--

[UN]

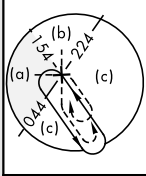
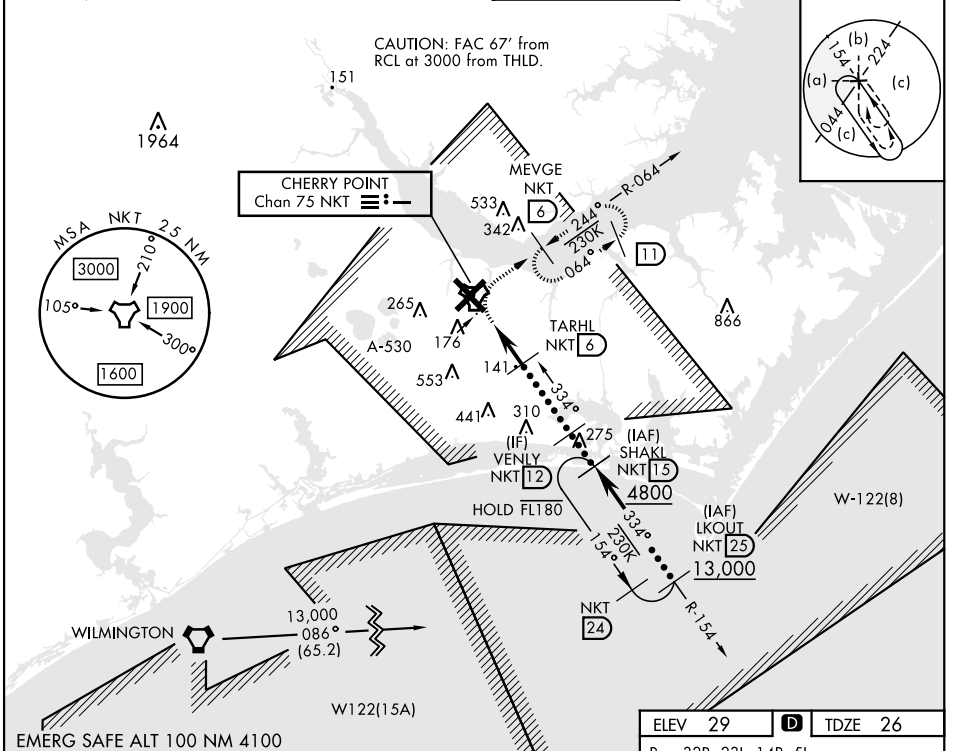
CHERRY POINT MCAS (CUNNINGHAM FLD) (KNKT)

▼ \*When ALS inop, increase vis to 1 1/2 miles.

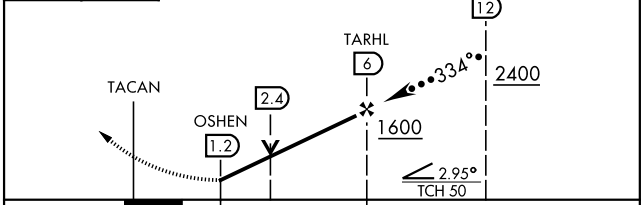
ALS F-1

MISSED APPROACH: Climbing right turn to 1600, intercept NKT R-064 to MEVGE and hold.

ATIS <b>127.475</b> <b>244.875</b>	(E) <b>119.75</b> (E) <b>132.575</b> (W) <b>119.35</b>	APP CON <b>360.775</b> (abv 2600') <b>299.6</b> (at/blw 2600') <b>377.175</b> (N) <b>124.1</b> <b>268.7</b>	TOWER <b>121.3</b> <b>340.2</b>	GND CON <b>128.625</b> <b>239.025</b>	CLNC DEL <b>125.95</b> <b>316.125</b>	ASR/PAR
--	--	--	------------------------------------	---	---	---------

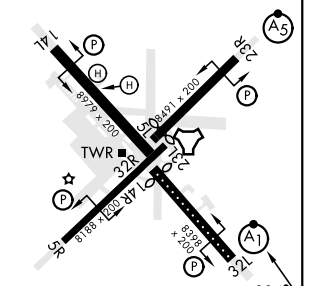


1600 NKT R-064	MEVGE NKT 6	VGSI and descent angle not coincident. (VGSI Angle 3.00/TCH 78)
----------------	-------------	---



ELEV 29	TDZE 26
---------	---------

Rwy 32R, 23L, 14R, 5L marked in center mat area.



CATEGORY	C	D	E
S-32L*	460-3/4	435 (500-3/4)	
CIRCLING	580-1 1/2	580-2	700-2 1/2
	551 (600-1 1/2)	551 (600-2)	671 (700-2 1/2)

HIRL all rwys  
REIL Rwy 5L and 14R  
Rwy 5L-23R ldg 7552'  
Rwy 14R-32L ldg 7551'

CHERRY POINT, NORTH CAROLINA 34° 54' N-76° 53' W CHERRY POINT MCAS (CUNNINGHAM FLD) (KNKT)

Amtd 5 02NOV23

# HI-TACAN Y RWY 32L

SE-2, 15 MAY 2025 to 12 JUN 2025

SE-2, 15 MAY 2025 to 12 JUN 2025