

(ZETTR4.ZETTR) 24137

ZETTR FOUR DEPARTURE (RNAV)

AL-467 (FAA)

WILLOW RUN (YIP)

DETROIT, MICHIGAN

DETROIT DEP CON
118.95 284.0
ATIS
127.425
GND CON
119.975
WILLOW RUN TOWER
125.275 256.9

RNAV 1 - DME/DME/IRU or GPS.

RADAR required.

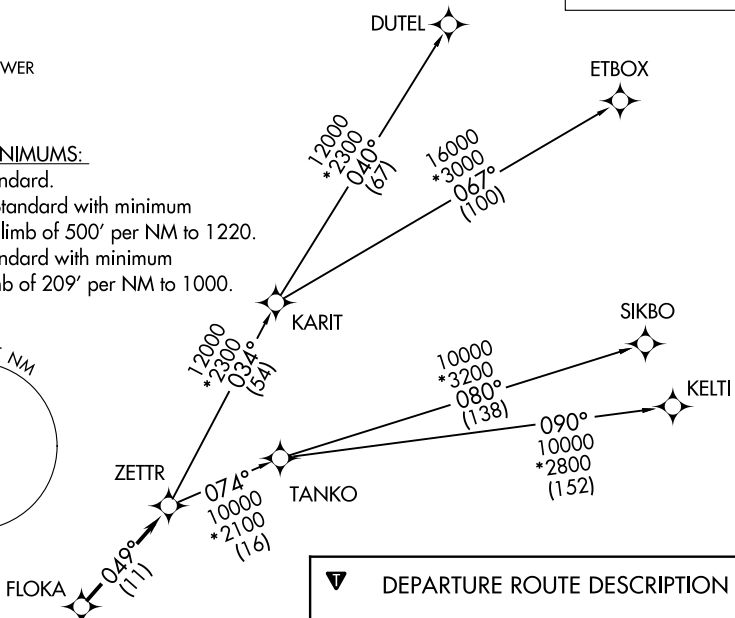
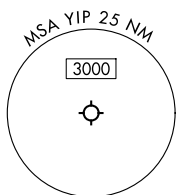
**TOP ALTITUDE:
ASSIGNED BY ATC**

TAKEOFF MINIMUMS:

Rwy 23: Standard.

Rwys 5, 9: Standard with minimum
climb of 500' per NM to 1220.

Rwy 27: Standard with minimum
climb of 209' per NM to 1000.



DEPARTURE ROUTE DESCRIPTION

TAKEOFF RUNWAY 5: Climb on heading 053° to 1220, then on heading 300° or as assigned by ATC, for RADAR vectors to FLOKA, thence....

TAKEOFF RUNWAY 9: Climb on heading 095° to 1220, then on heading 300° or as assigned by ATC, for RADAR vectors to FLOKA, thence....

TAKEOFF RUNWAY 23: Climb on heading 233° or as assigned by ATC, for RADAR vectors to FLOKA, thence....

TAKEOFF RUNWAY 27: Climb on heading 275° or as assigned by ATC, for RADAR vectors to FLOKA, thence....

....on track 049° to ZETTR, then on (transition). Maintain ATC assigned altitude, expect filed altitude 10 minutes after departure.

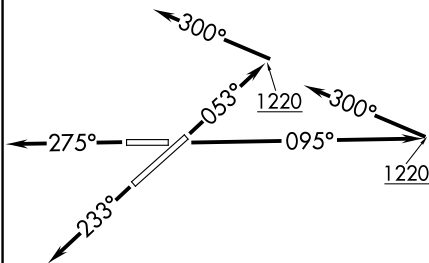
DUTEL TRANSITION (ZETTR4.DUTEL):

ETBOX TRANSITION (ZETTR4.ETBOX):

KELTI TRANSITION (ZETTR4.KELTI):

SIKBO TRANSITION (ZETTR4.SIKBO):

TANKO TRANSITION (ZETTR4.TANKO):



NOTE: Turbojet departures at/above 10000, maintain 280K until advised by ATC.

NOTE: TANKO Transition: For use by CYYZ area arrivals only, or as assigned by ATC.

NOTE: Chart not to scale.

ZETTR FOUR DEPARTURE (RNAV)
(ZETTR4.ZETTR) 16MAY24

DETROIT, MICHIGAN
WILLOW RUN (YIP)

EC-1, 15 MAY 2025 to 12 JUN 2025

EC-1, 15 MAY 2025 to 12 JUN 2025