

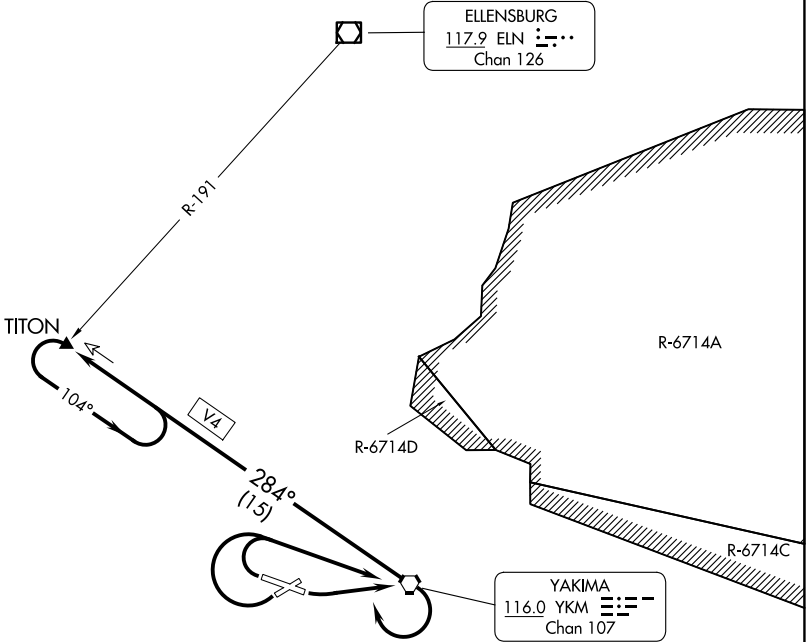
(YKM7.YKM) 23334

# YAKIMA SEVEN DEPARTURE

AL-465 (FAA)

YAKIMA AIR TRML/MCALLISTER FLD (YKM)  
YAKIMA, WASHINGTON

SPOKANE DEP CON ★  
123.8 263.15  
ATIS  
125.25  
CLNC DEL  
121.9  
GND CON  
121.9  
YAKIMA TOWER ★  
133.25 257.8



NW-1, 15 MAY 2025 to 12 JUN 2025

NW-1, 15 MAY 2025 to 12 JUN 2025

### TAKEOFF MINIMUMS

- Rwy 4: NA - obstacles.
- Rwy 9: Standard with minimum climb of 325' per NM to 5000.
- Rwy 22: Standard with minimum climb of 325' per NM to 5000.
- Rwy 27: Standard with minimum climb of 325' per NM to 5000.

NOTE: Chart not to scale.



### DEPARTURE ROUTE DESCRIPTION

TAKEOFF RUNWAY 9: Climbing left turn direct YKM VORTAC, Thence. . . .

TAKEOFF RUNWAYS 22, 27: Climbing right turn direct YKM VORTAC. Thence. . . .

. . . .then climbing right turn to intercept YKM R-284 outbound to TITON INT and hold.  
Continue climb in hold to MEA/MCA for route of flight. Then on (assigned route).

YAKIMA SEVEN DEPARTURE  
(YKM7.YKM) 10NOV16

YAKIMA, WASHINGTON  
YAKIMA AIR TRML/MCALLISTER FLD (YKM)