

WAAS CH 90512 W27A	APP CRS 274°	Rwy Idg 7604 TDZE 1068 Apt Elev 1099
--	------------------------	---

RNAV (GPS) X RWY 27

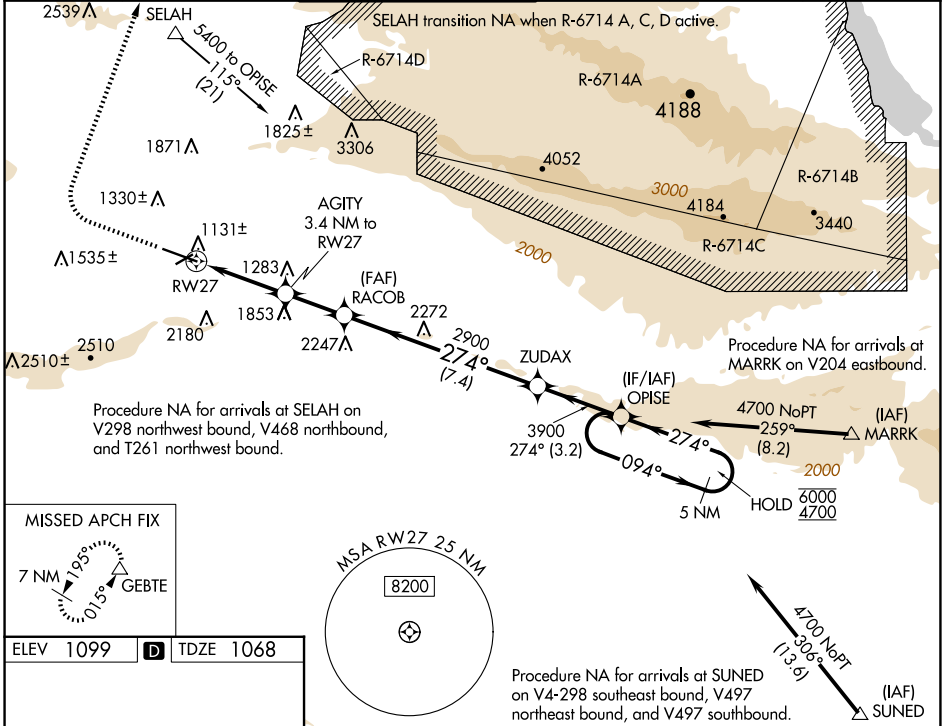
YAKIMA AIR TRML/MCALLISTER FLD (YKM)

RNP APCH.
 ▼ Circling NA south of Rws 9 and 27.
 ▲ For inop ALS, increase LPV all Cats visibility to 1¾ SM.
 *RVR 1800 authorized with use of FD or AP or HUD to DA.

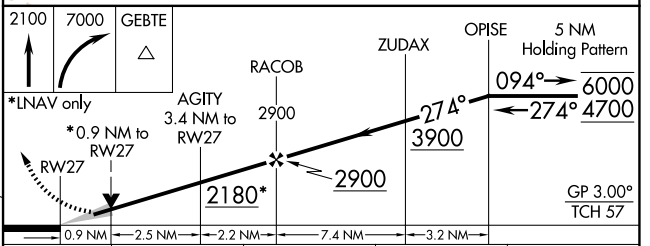
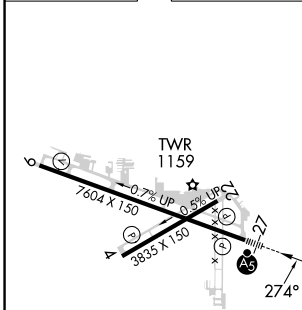
MALSRL
 AS

MISSED APPROACH: Climb to 2100 then climbing right turn to 7000 direct GEBTE and hold. Continue climb-in-hold to 7000. *Missed approach requires minimum climb of 300 feet per NM to 3700. #Missed approach requires minimum climb of 300 feet per NM to 4900.

ATIS 125.25	SPOKANE APP CON* 123.8 263.15	YAKIMA TOWER* 133.25 (CTAF) 257.8	GND CON 121.9	CLNC DEL 121.9	UNICOM 122.95
-----------------------	---	---	-------------------------	--------------------------	-------------------------



ELEV 1099	D	TDZE 1068
-----------	---	-----------



CATEGORY	A	B	C	D
LPV DA*	1268/24 200 (200-½)			
LPV DA	1668-1¼ 600 (600-1¼)			
LNAV MDA#	1400/24	332 (400-½)	1400/26	332 (400-½)
LNAV MDA	1720/24	652 (700-½)	1720-1¾	652 (700-1¾)
<input checked="" type="checkbox"/> CIRCLING	1720-1	621 (700-1)	1880-2¼	2280-3
			781 (800-2¼)	1181 (1200-3)

MIRL Rwy 4-22
 HIRL Rwy 9-27
 REIL Rws 4, 9, and 22

NW-1, 15 MAY 2025 to 12 JUN 2025

NW-1, 15 MAY 2025 to 12 JUN 2025