

# QUAKER EIGHT DEPARTURE

GREENSBORO DEP CON  
124.35 269.225  
ATIS  
121.3  
GND CON  
128.25  
WINSTON-SALEM TOWER ★  
123.75 257.8

RADAR required.  
RICHMOND Transition requires DME.

LYNCHBURG  
109.2 LYH  
Chan 29

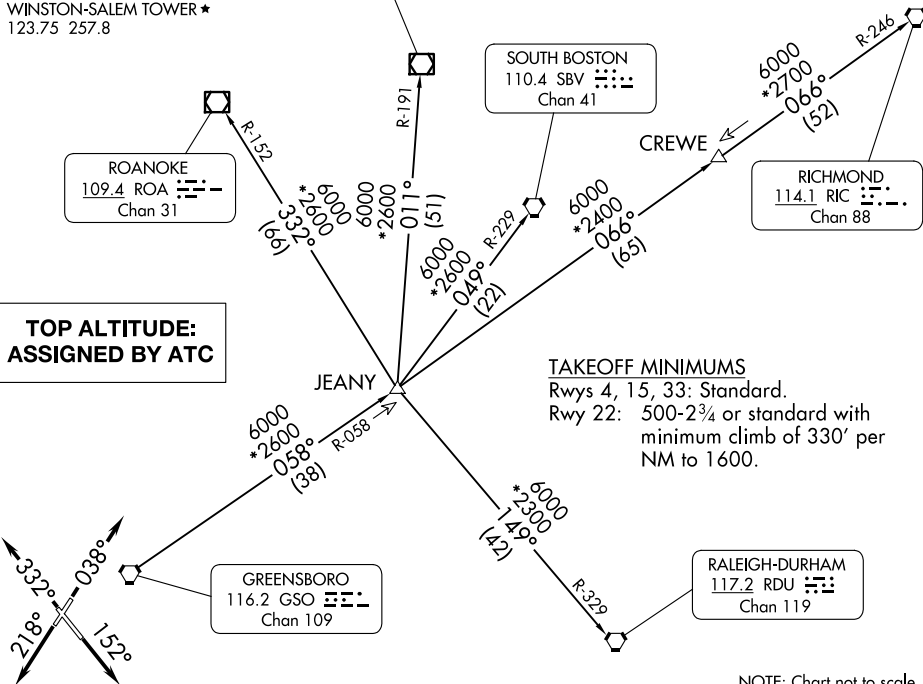
SOUTH BOSTON  
110.4 SBV  
Chan 41

ROANOKE  
109.4 ROA  
Chan 31

RICHMOND  
114.1 RIC  
Chan 88

**TOP ALTITUDE:  
ASSIGNED BY ATC**

**TAKEOFF MINIMUMS**  
Rwys 4, 15, 33: Standard.  
Rwy 22: 500-2¾ or standard with  
minimum climb of 330' per  
NM to 1600.



SE-2, 15 MAY 2025 to 12 JUN 2025

SE-2, 15 MAY 2025 to 12 JUN 2025

## DEPARTURE ROUTE DESCRIPTION

TAKEOFF RUNWAY 4: Climb on heading 038°, thence. . . .

TAKEOFF RUNWAY 15: Climb on heading 152°, thence. . . .

TAKEOFF RUNWAY 22: Climb on heading 218°, thence. . . .

TAKEOFF RUNWAY 33: Climb on heading 332°, thence. . . .

. . . .maintain altitude assigned by ATC. RADAR vectors will be provided to intercept assigned radial associated with the issued transition, or if no transition assigned, RADAR vectors will be provided to the appropriate fix. Expect requested altitude/flight level 10 minutes after departure.

LYNCHBURG TRANSITION (QUAK8.LYH): From over GSO VORTAC on GSO R-058 to JEANY then on LYH R-191 to LYH VOR/DME.

RALEIGH/DURHAM TRANSITION (QUAK8.RDU): From over GSO VORTAC on GSO R-058 to JEANY then on RDU R-329 to RDU VORTAC.

RICHMOND TRANSITION (QUAK8.RIC): From over GSO VORTAC on GSO R-058 to JEANY then on GSO R-058 and RIC R-246 to CREWE then on RIC R-246 to RIC VORTAC.

ROANOKE TRANSITION (QUAK8.ROA): From over GSO VORTAC on GSO R-058 to JEANY then on ROA R-152 to ROA VOR/DME.

SOUTH BOSTON TRANSITION (QUAK8.SBV): From over GSO VORTAC on GSO R-058 to JEANY then on SBV R-229 to SBV VORTAC.