

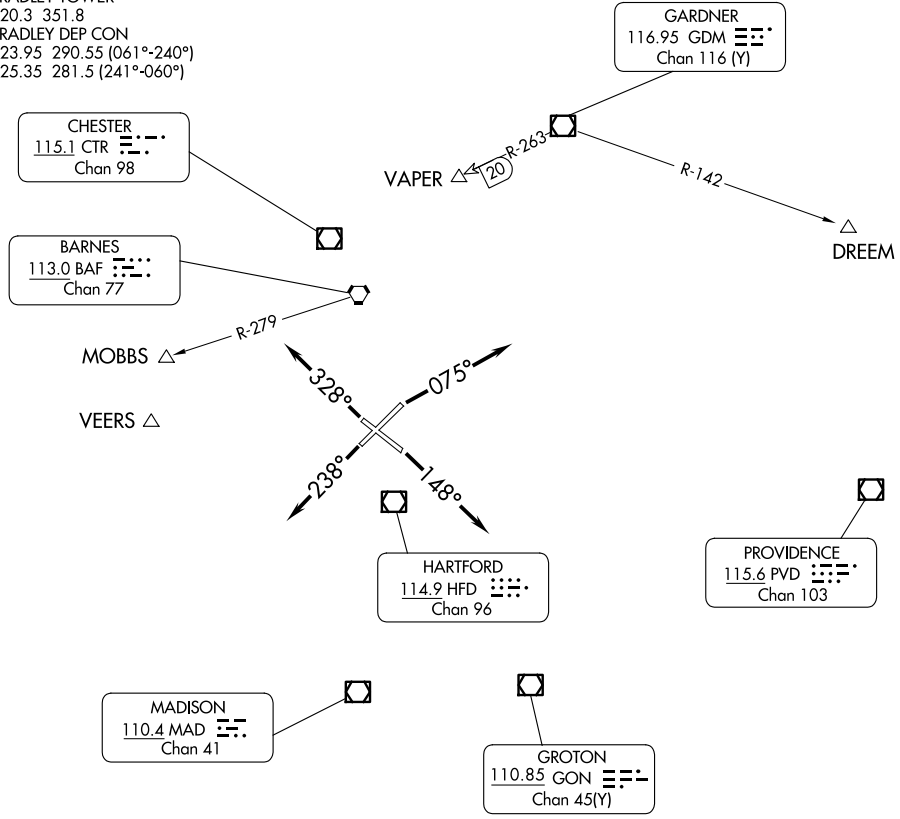
# BRADLEY SIX DEPARTURE

BRADLEY INTL (BDL)  
WINDSOR LOCKS, CONNECTICUT

D-ATIS 118.15  
 CLNC DEL 121.75 322.3  
 GND CON 121.9 348.6  
 CPDLC  
 BRADLEY TOWER 120.3 351.8  
 BRADLEY DEP CON 123.95 290.55 (061°-240°)  
 125.35 281.5 (241°-060°)

NOTE: RADAR required.  
 NOTE: Initial departure headings are predicated on avoiding noise sensitive areas, flight crew awareness and compliance is important in minimizing noise impacts on surrounding communities.  
 NOTE: Appropriate departure frequency to be assigned by ATC.

**TOP ALTITUDE:**  
**4000**



NE-1, 15 MAY 2025 to 12 JUN 2025

NE-1, 15 MAY 2025 to 12 JUN 2025

### TAKEOFF MINIMUMS

Rwys 6, 15, 24: Standard.  
 Rwy 33: Standard with minimum climb of 340' per NM to 1000.

NOTE: Chart not to scale.

### DEPARTURE ROUTE DESCRIPTION

- TAKEOFF RUNWAY 6:** Climb heading 075° or as assigned, thence....
- TAKEOFF RUNWAY 15:** Climb heading 148° or as assigned, thence....
- TAKEOFF RUNWAY 24:** Climb heading 238° or as assigned, thence....
- TAKEOFF RUNWAY 33:** Climb heading 328° or as assigned, thence....

....on RADAR vectors to filed/assigned route or depicted fix. Maintain 4000 or assigned altitude, expect clearance to requested altitude/flight level 10 minutes after departure.

# BRADLEY SIX DEPARTURE

WINDSOR LOCKS, CONNECTICUT  
BRADLEY INTL (BDL)