

LOC I-GMX <b>111.55</b>	APP CRS <b>238°</b>	Rwy Idg <b>8016</b> TDZE <b>26</b> Apt Elev <b>32</b>
----------------------------	------------------------	---

# ILS Y or LOC RWY 24

WILMINGTON INTL (ILM)

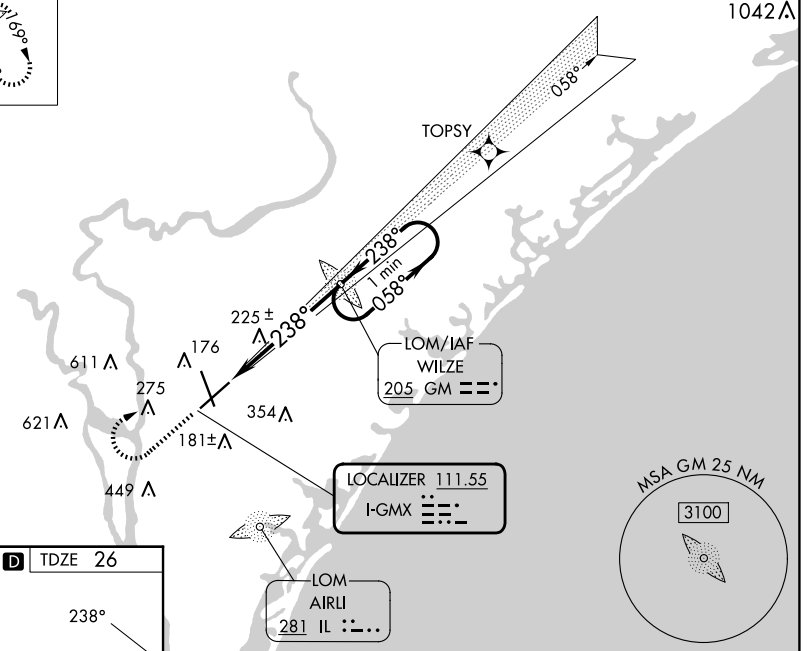
<p><b>**RVR 1800 authorized with use of FD or AP or HUD to DA. ADF required.</b></p>	<p>MALSR</p>	<p>MISSED APPROACH: Climb to 500 then climbing right turn to 1800 direct WILZE LOM and hold.</p>
--	--------------	--

<p>ATIS <b>124.975</b></p>	<p>WILMINGTON APP CON* <b>118.25 284.65</b> (164°-343°) <b>135.75 317.425</b> (344°-163°)</p>	<p>WILMINGTON TOWER* <b>119.9</b> (CTAF) <b>0 239.3</b></p>	<p>GND CON <b>121.9 348.6</b></p>	<p>CLNC DEL <b>120.875</b></p>	<p>UNICOM <b>122.95</b></p>
--------------------------------	---	---	---------------------------------------	------------------------------------	---------------------------------

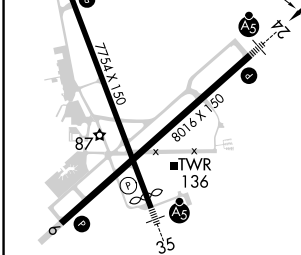
ALTERNATE MISSED APCH FIX

AIRLI  
IL ::...  
**281**

## RNAV 1-GPS or RADAR REQUIRED



ELEV 32	D	TDZE 26
---------	---	---------



500	1800	GM	WILZE LOM	One Minute Holding Pattern
<p>VGSI and ILS glidepath not coincident (VGSI Angle 3.00/TCH 48).</p>			<p>1798</p> <p>058° → 1800</p> <p>← 238°</p> <p>1800</p> <p>GS 3.00° TCH 52</p>	

	5.3 NM			
CATEGORY	A	B	C	D
S-ILS 24**	226/24		200 (200-½)	
S-LOC 24	500/24	474 (500-½)	500/50	474 (500-1)
CIRCLING	560-1	528 (600-1)	720-2 688 (700-2)	920-3 888 (900-3)

WILMINGTON, NORTH CAROLINA  
Amdt 2 17AUG17

34°16'N-77°54'W

# WILMINGTON INTL (ILM) ILS Y or LOC RWY 24

SE-2, 15 MAY 2025 to 12 JUN 2025

SE-2, 15 MAY 2025 to 12 JUN 2025