

TACAN Y RWY 32

TACAN NUW Chan 85	APCH CRS 311°	Rwy ldg 8000 TDZE 47 Arprt Elev 47
-----------------------------	-------------------------	---

[USN]

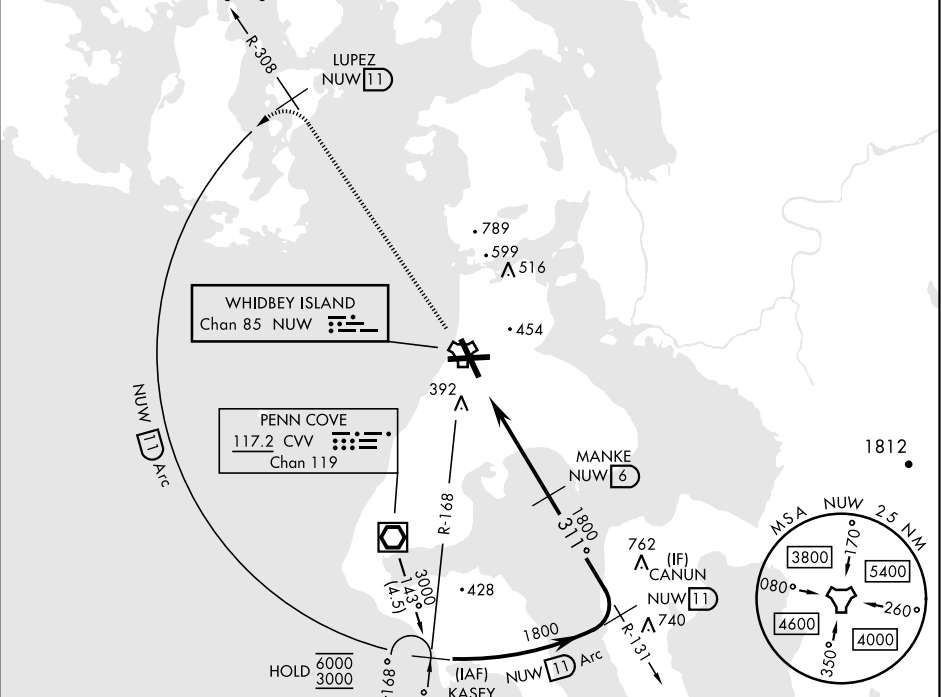
WHIDBEY ISLAND NAS (AULT FLD) (KNUW)

▼ * When ALS inop, increase CAT AB RVR to 55, vis to 1 mile; CAT CDE to 1½ miles.

ALSF-2 **(A)** MISSED APPROACH: Climb to 3000 via NUW TACAN R-308 to LUPEZ, then Arc SW of NUW via 11 DME Arc to KASEY and hold.

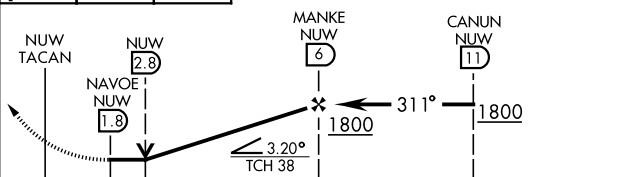
ATIS 134.15 281.5	WHIDBEY APP CON 120.7 270.8 (E) 118.2 285.65 (W)	WHIDBEY TOWER 127.9 340.2	GND CON 121.75 336.4	CLNC DEL 135.1 379.9	ASR/PAR
-----------------------------	--	-------------------------------------	--------------------------------	--------------------------------	---------

CAUTION: CAT CDE in med seg length 5 NM.



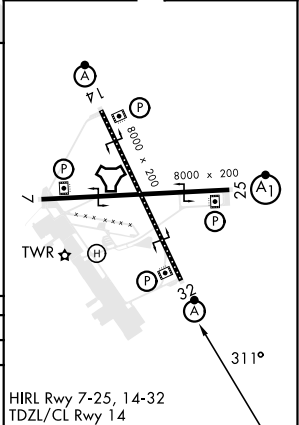
EMERG SAFE ALT 100 NM 15,500

3000 NUW R-308	LUPEZ NUW 11	NUW 11 Arc
-------------------	-----------------	---------------



CATEGORY	A	B	C	D	E
S-32 *	680/30	633 (700-¾)	680-1½	633 (700-1¾)	
C CIRCLING	760-1	713 (800-1)	860-2½ 813 (900-2½)	900-2¾ 853 (900-2¾)	1200-3 1153 (1200-3)

ELEV	47	TDZE	47
------	----	------	----



TACAN Y RWY 32

NW-1, 15 MAY 2025 to 12 JUN 2025

NW-1, 15 MAY 2025 to 12 JUN 2025