

OAK HARBOR, WASHINGTON

ILS or LOC/DME RWY 14

LOC/DME I-NUW 110.1 Chan 38	APCH CRS 137°	Rwy Idg 8000 TDZE 39 Arprt Elev 47
---	-------------------------	---

[USN]

WHIDBEY ISLAND NAS (AULT FLD) (KNUW)

VOR, DME required.

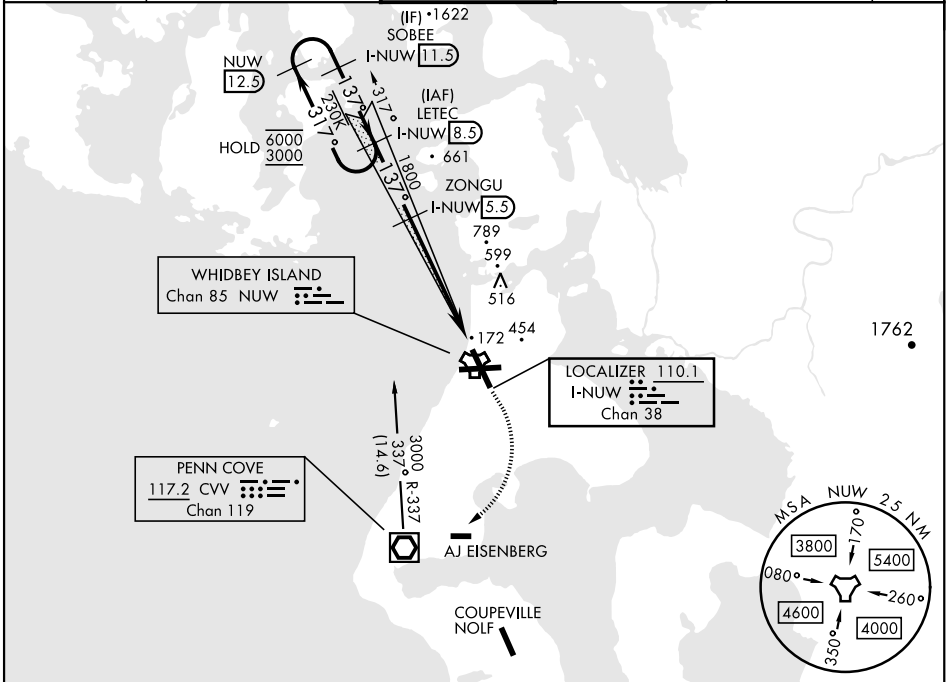
*When TDZ/CL lights inop, increase RVR to 24.
 When ALS inop, increase RVR to 40, vis to 3/4 mile.
 **When ALS inop, increase CAT AB RVR to 55,
 vis to 1 mile; CAT CDE RVR to 60, vis to 1 1/8 miles.

ALSF-2

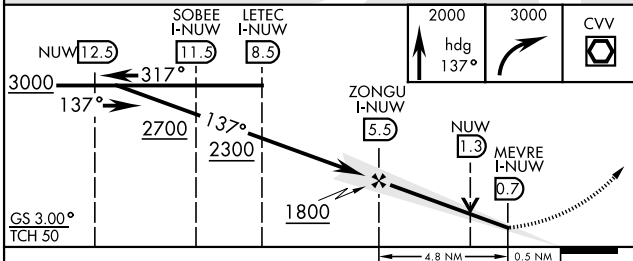


MISSED APPROACH: Climb to 2000 via hdg 137°, then climbing right turn to 3000, direct CVV VOR/DME, then via CVV R-337 to LETEC and hold.

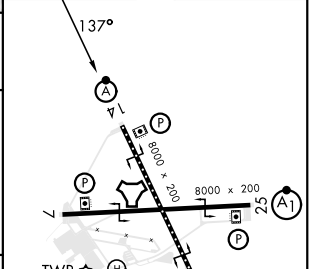
ATIS 134.15 281.5	WHIDBEY APP CON 120.7 270.8 (E) 118.2 285.65 (W)	WHIDBEY TOWER 127.9 340.2	GND CON 121.75 336.4	CLNC DEL 135.1 379.9	ASR/PAR
-----------------------------	--	-------------------------------------	--------------------------------	--------------------------------	---------



EMERG SAFE ALT 100 NM 15,500



ELEV	47	TDZE	39
------	----	------	----



CATEGORY	A	B	C	D	E
S-ILS 14*	239/18		200	(200-1/2)	
S-LOC 14**	440/24	401 (400-1/2)	440/40	401 (400-3/4)	
CIRCLING	760-1	713 (800-1)	860-2 1/2	900-2 3/4	1200-3
			813 (900-2 1/2)	853 (900-2 3/4)	1153 (1200-3)

HIRL Rwy 7-25, 14-32
TDZL/CL Rwy 14

OAK HARBOR, WASHINGTON

48°21'N-122°39'W

WHIDBEY ISLAND NAS (AULT FLD) (KNUW)

Amdt 2 31OCT24

ILS or LOC/DME RWY 14

NW-1, 15 MAY 2025 to 12 JUN 2025

NW-1, 15 MAY 2025 to 12 JUN 2025