

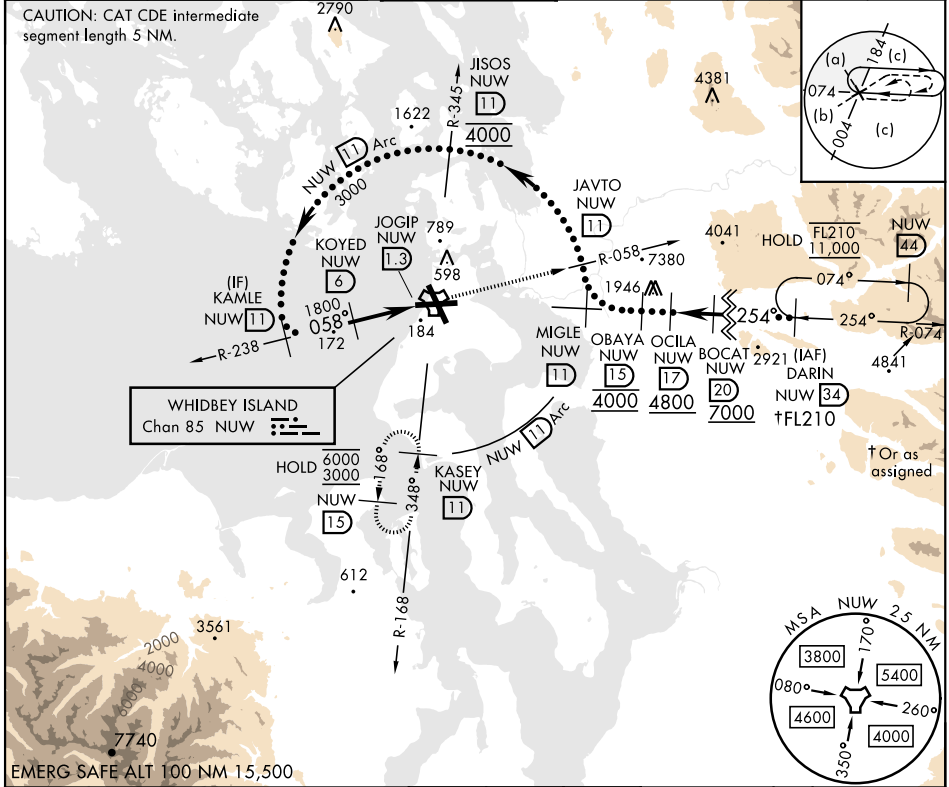
OAK HARBOR, WASHINGTON

# HI-TACAN Z RWY 7

TACAN Chan <b>85</b>	APCH CRS <b>058°</b>	Rwy ldg TDZE <b>25</b> Arpt Elev <b>47</b>	[USN]	WHIDBEY ISLAND NAS (AULT FLD) (KNUW)
-------------------------	-------------------------	--	-------	--------------------------------------

**▼** MISSED APPROACH: Climb to 3000 via NUW TACAN R-058 to JAVTO, then arc SE of NUW via 11 DME Arc to KASEY and hold.

ATIS <b>134.15 281.5</b>	WHIDBEY APP CON <b>120.7 270.8 (EAST)</b> <b>118.2 285.65 (WEST)</b>	WHIDBEY TOWER <b>127.9 340.2</b>	GND CON <b>121.75 336.4</b>	CLNC DEL <b>135.1 379.9</b>	ASR/PAR
-----------------------------	--	-------------------------------------	--------------------------------	--------------------------------	---------



NW-1, 15 MAY 2025 to 12 JUN 2025

NW-1, 15 MAY 2025 to 12 JUN 2025

	ELEV	47	TDZE	25
CATEGORY	C	D	E	
S-7	440/60	415	(400-1½)	
CIRCLING	860-2½ 813 (900-2½)	900-2¾ 853 (900-2¾)	1200-3 1153 (1200-3)	TDZL/CL Rwy 14 HIRL Rwy 7-25, 14-32

OAK HARBOR, WASHINGTON 48°21'N-122°39'W WHIDBEY ISLAND NAS (AULT FLD) (KNUW)

Amdt 4 31OCT24

# HI-TACAN Z RWY 7