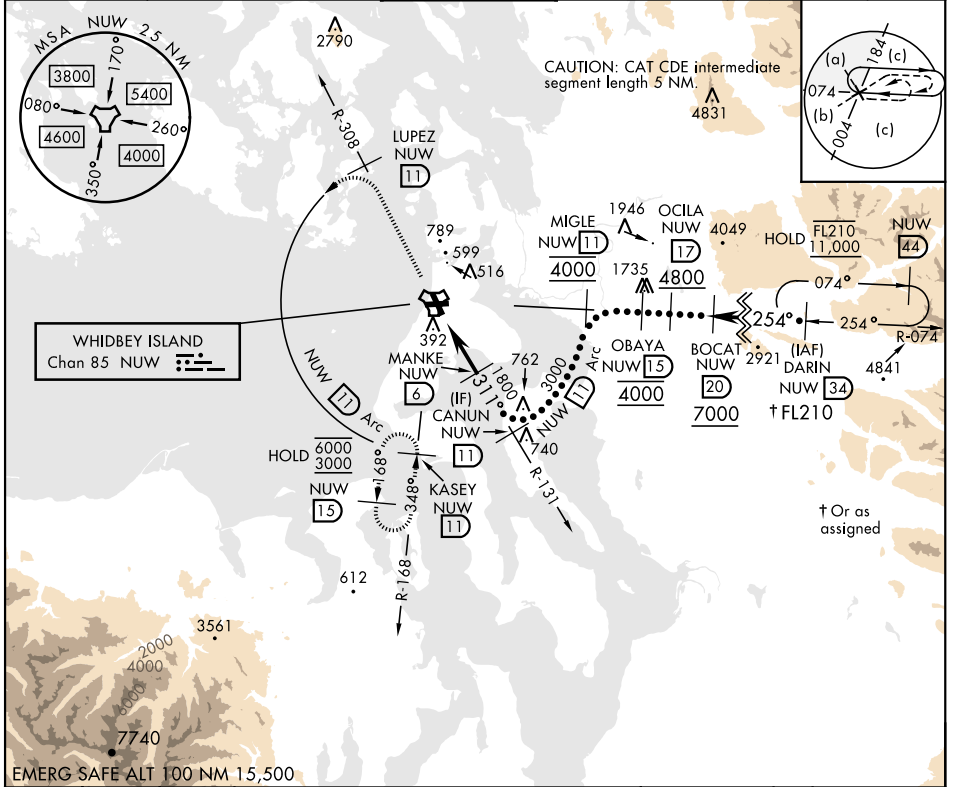


HI-TACAN Z RWY 32

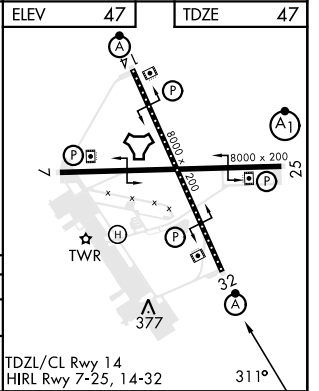
TACAN Chan 85	APCH CRS 311°	Rwy ldg TDZE 47 Arpt Elev 47	[USN]	WHIDBEY ISLAND NAS (AULT FLD) (KNUW)
-------------------------	-------------------------	--	-------	--------------------------------------

▼ *When ALS inop, increase CAT CDE vis to 1 3/4 miles.
 ⚠ ALSF-2
 ⚠ MISSED APPROACH: Climb to 3000 via NUW TACAN R-308 to LUPEZ, then arc W of NUW via 11 DME Arc to KASEY and hold.

ATIS 134.15 281.5	WHIDBEY APP CON 120.7 270.8 (EAST) 118.2 285.65 (WEST)	WHIDBEY TOWER 127.9 340.2	GND CON 121.75 336.4	CLNC DEL 135.1 379.9	ASR/PAR
-----------------------------	--	-------------------------------------	--------------------------------	--------------------------------	---------



3000 NUW R-308 LUPEZ NUW 11 NUW Arc 11	NUW TACAN NAVOE NUW 1.8 NUW 2.8 MANKE NUW 6 CANUN NUW 11	3000 1800 3.20° TCH 38 4.2 NM	
CATEGORY	C	D	E
S-32*	680-1 3/8	633 (700-1%)	
CIRCLING	860-2 1/2 813 (900-2 1/2)	900-2 3/4 853 (900-2 3/4)	1200-3 1153 (1200-3)



HI-TACAN Z RWY 32

NW-1, 15 MAY 2025 to 12 JUN 2025

NW-1, 15 MAY 2025 to 12 JUN 2025