

# HI-TACAN Z RWY 14

TACAN NUV Chan <b>85</b>	APCH CRS <b>141°</b>	Rwy ldg TDZE Arpt Elev <b>8000</b> <b>39</b> <b>47</b>
-----------------------------	-------------------------	---

[USN]

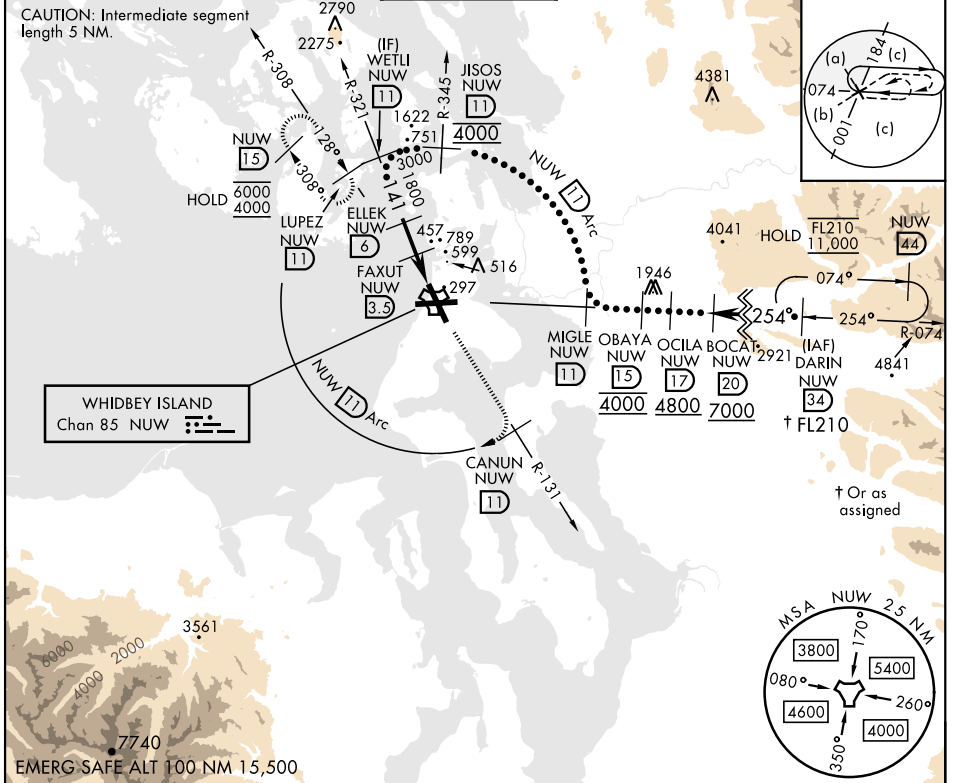
WHIDBEY ISLAND NAS (AULT FLD) (KNUW)

\* When ALS inop, increase vis to 1½ miles.

ALS-2

MISSED APPROACH: Climb to 4000 via NUV TACAN R-131 to CANUN, then arc SW of NUV TACAN via 11 DME Arc to LUPEZ and hold.

ATIS <b>134.15 281.5</b>	WHIDBEY APP CON <b>120.7 270.8</b> (E) <b>118.2 285.65</b> (W)	WHIDBEY TOWER <b>127.9 340.2</b>	GND CON <b>121.75 336.4</b>	CLNC DEL <b>135.1 379.9</b>	ASR/PAR
-----------------------------	--	-------------------------------------	--------------------------------	--------------------------------	---------



	WETLI NUV (11)	ELLEK NUV (6)	FAXUT NUV (3.5)	NUV (1.9)	NUV TACAN	4000 NUV R-131	CANUN NUV (11)	NUV (11) Arc	ELEV 47	TDZE 39
	3000		1800	1020						
	2.5 NM		2.7 NM							
CATEGORY	C		D		E					
S-14*	560/55		521		(600-1)					
CIRCLING	860-2½ 813 (900-2½)		900-2¾ 853 (900-2¾)		1200-3 1153 (1200-3)					
	HIRL Rwy 7-25, 14-32									
	TDZL/CL Rwy 14									

# HI-TACAN Z RWY 14

NW-1, 15 MAY 2025 to 12 JUN 2025

NW-1, 15 MAY 2025 to 12 JUN 2025