

WAAS CH <b>77817</b> <b>W02A</b>	APP CRS <b>024°</b>	Rwy Idg TDZE <b>264</b> Apt Elev <b>270</b>	<b>9000</b>
--	------------------------	---	-------------

# RNAV (GPS) RWY 2

WESTFIELD-BARNES RGNL (BAF)

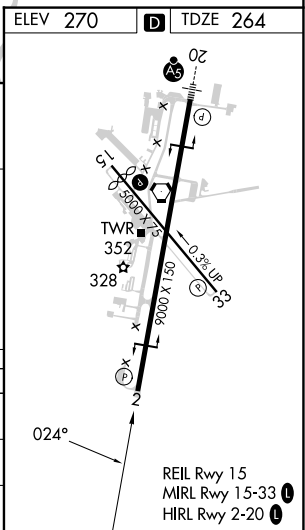
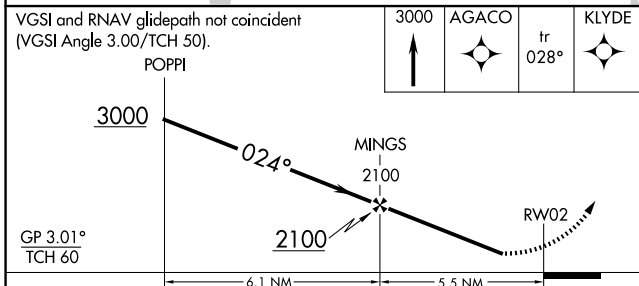
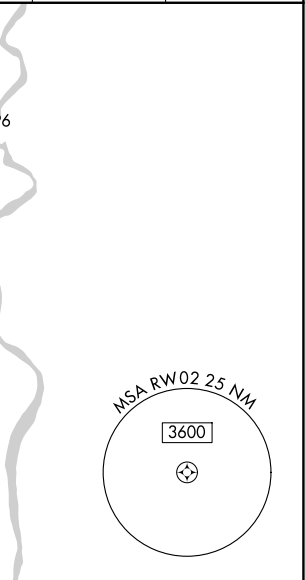
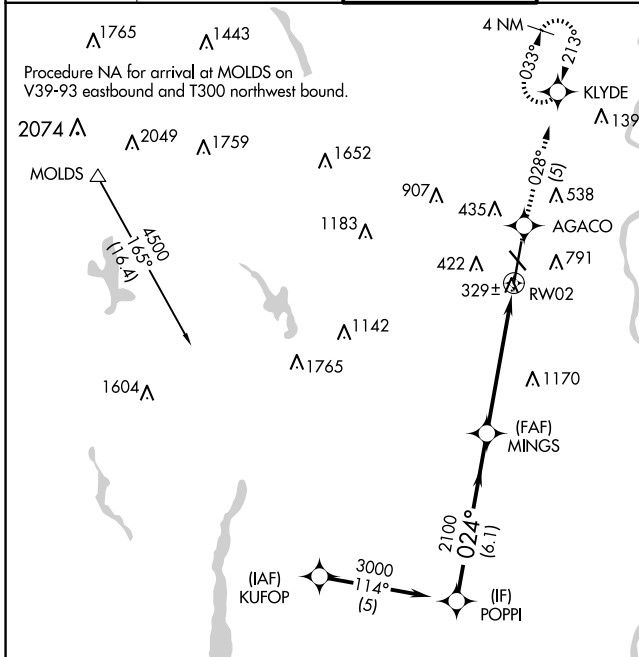
RNP APCH.

Baro-VNAV NA when using Bradley Intl altimeter setting. For uncompensated Baro-VNAV systems, LNAV/VNAV NA below -15°C or above 54°C.

When local altimeter setting not received, use Bradley Intl altimeter setting and increase all DA 44 feet and all MDA 60 feet; increase LNAV/VNAV all Cats visibility ¼ mile. Rwy 2 helicopter visibility reduction below ¾ SM NA.

MISSED APPROACH: Climb to 3000 direct AGACO and on track 028° to KLYDE and hold, continue climb-in-hold to 3000.

ATIS <b>127.1 263.15</b>	BRADLEY APP CON <b>125.35 281.5</b>	WESTFIELD TOWER * <b>125.075 251.1</b>	GND CON <b>121.7 289.4</b>	CLNC DEL <b>121.7</b>	CTAF <b>118.9</b>
-----------------------------	--	---	-------------------------------	--------------------------	----------------------



CATEGORY	A	B	C	D	E
LPV DA	515-1 251 (300-1)				
LNAV/VNAV DA	858-2 594 (600-2)				
LNAV MDA	1360-1¼ 1096 (1100-1¼)	1360-1½ 1096 (1100-1½)	1360-3	1096 (1100-3)	

NE-1, 15 MAY 2025 to 12 JUN 2025

NE-1, 15 MAY 2025 to 12 JUN 2025

REIL Rwy 15  
MIRL Rwy 15-33  
HIRL Rwy 2-20