

# HI-TACAN RWY 20

VORTAC BAF <b>113.0</b> Chan <b>77</b>	APCH CRS <b>208°</b>	Rwy ldg THRE <b>267</b> Arpt Elev <b>270</b>
--	-------------------------	--

[USAF]

WESTFIELD-BARNES RGNL (KBAF)

**V** \*When ALS inop, increase CAT CDE vis to 1½ miles.  
\*\* When ALS inop, increase CAT CDE vis to 1% miles.



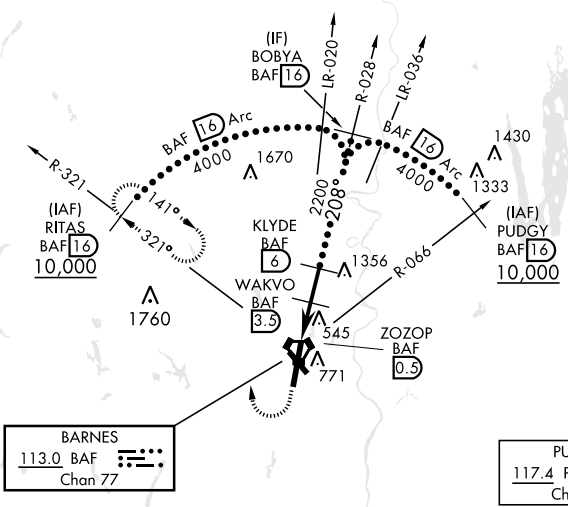
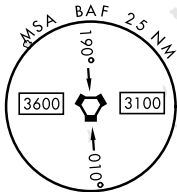
MISSED APPROACH: Climb to 1300, then climbing right turn to 4000 via hdg 010° and BAF VORTAC R-321 to RITAS and hold.

ATIS <b>127.1 263.15</b>	BRADLEY APP CON <b>125.35 281.5</b>	WESTFIELD TOWER ★ <b>125.075 (CTAF) 251.1</b>	GND CON <b>121.7 289.4</b>
-----------------------------	--	--	-------------------------------

When lcl altimeter setting not received, use Bradley Intl altimeter setting.  
When VGSI inop, straight-in/circling Rwy 20 NA at night.

•3491

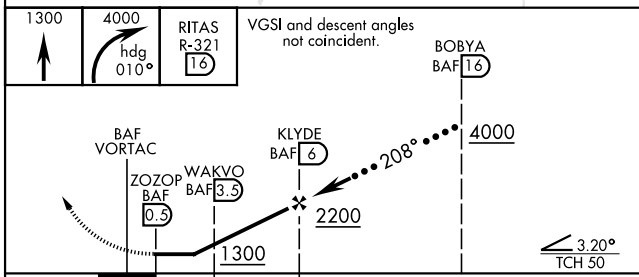
When VGSI inop, circling to Rwy 15, 33 NA at night.



NE-1, 15 MAY 2025 to 12 JUN 2025

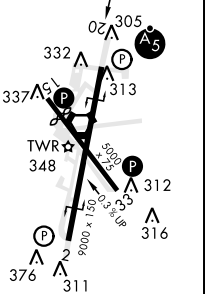
NE-1, 15 MAY 2025 to 12 JUN 2025

EMERG SAFE ALT 100 NM 7000



ELEV 270	THRE 267
----------	----------

Rwy 15 ldg 4510'  
Rwy 20 ldg 8919'



CATEGORY	C	D	E
S-20*	800/55	533	(600-1¼)
CIRCLING	1160-2¾	1160-3	1640-3
	890 (900-2¾)	890 (900-3)	1370 (1400-3)
BRADLEY INTL ALTIMETER			
S-20**	840-1¾	573	(600-1¾)
CIRCLING	1200-2¾	1200-3	1680-3
	930 (1000-2¾)	930 (1000-3)	1410 (1500-3)

HIRL Rwy 2-20  
MIRL Rwy 15-33  
REIL Rwy 15

# HI-TACAN RWY 20