

WAAS CH 82125 W22A	APP CRS 224°	Rwy Idg TDZE Apt Elev	6001 274 279
--	------------------------	-----------------------------	---

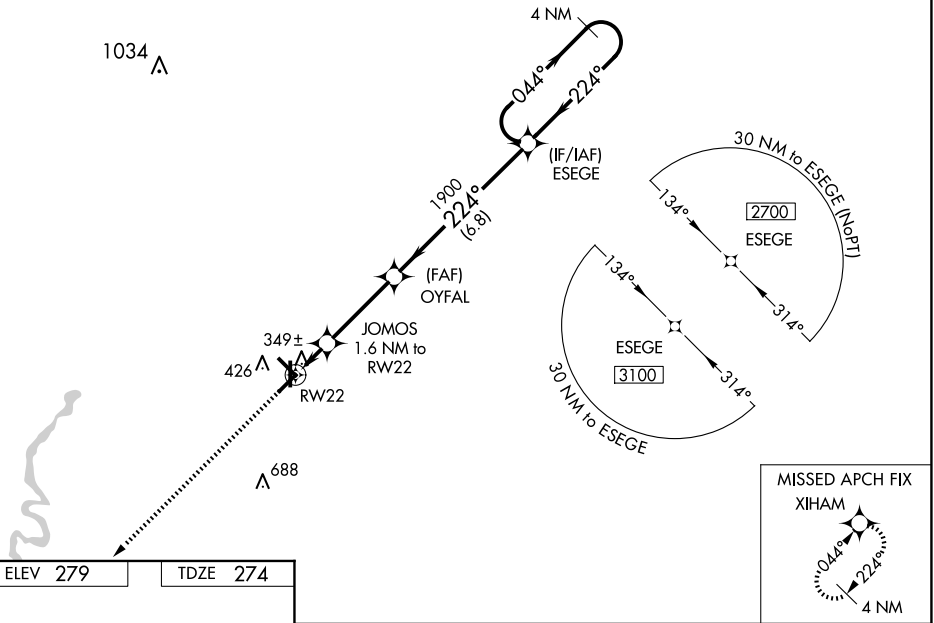
RNAV (GPS) RWY 22

WALNUT RIDGE RGNL (ARG)

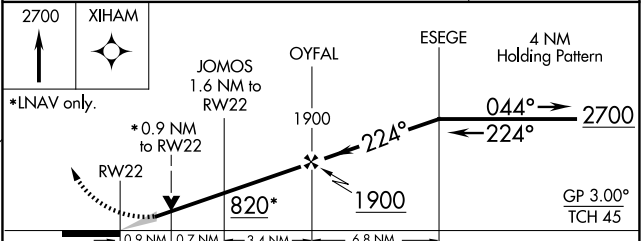
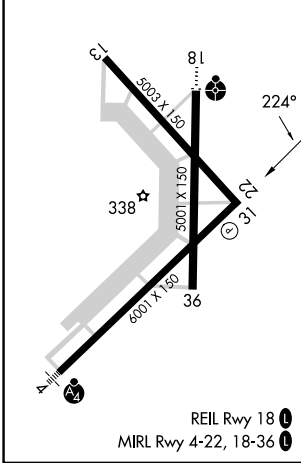
⚠ Baro-VNAV NA when using Jonesboro altimeter setting. For uncompensated Baro-VNAV systems, LNAV/VNAV NA below -15°C (5°F) or above 42°C (107°F). DME/DME RNP-0.3 NA. VDP NA with Jonesboro altimeter setting. When local altimeter setting not received, use Jonesboro altimeter setting and increase LPV and LNAV/VNAV DA to 578 feet, and all MDAs 60 feet; increase LNAV Cats C/D visibility 1/8 SM and Circling Cat D visibility 1/4 SM.

MISSED APPROACH:
Climb to 2700 direct XIHAM and hold.

AWOS-3PT 126.525	MEMPHIS CENTER 120.075 289.4	UNICOM 122.8 (CTAF) 📻
----------------------------	--	--



ELEV 279	TDZE 274
----------	----------



CATEGORY	A	B	C	D
LPV DA		524-1	250 (300-1)	
LNAV/VNAV DA		524-1	250 (300-1)	
LNAV MDA		600-1	326 (400-1)	
CIRCLING	760-1	481 (500-1)	800-1½ 521 (600-1½)	1000-2¼ 721 (800-2¼)

SC-1, 15 MAY 2025 to 12 JUN 2025

SC-1, 15 MAY 2025 to 12 JUN 2025