

TACAN RWY 30

TACAN DWG Chan 2	APCH CRS 322°	Rwy Idg 12,004 TDZE 68 Arpt Elev 84
---------------------	------------------	---

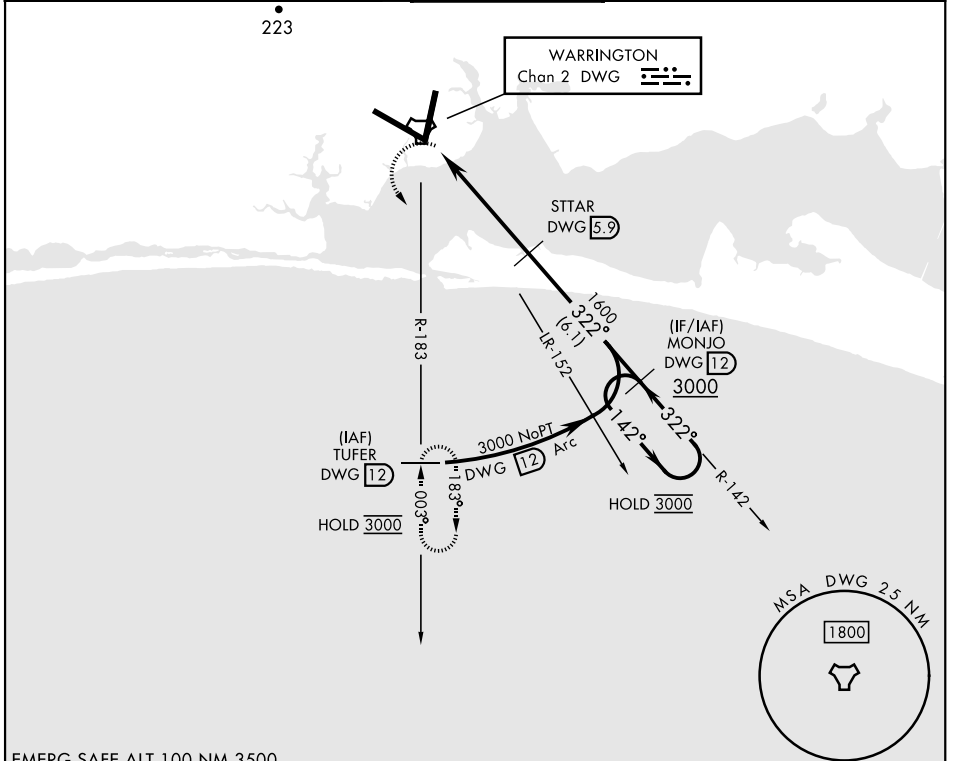
[USAF] EGLIN AFB DESTIN FORT WALTON BEACH (KVPS)

* When ALS inop, increase CAT AB RVR to 55 vis to 1 mile;
CAT CDE vis to 1 $\frac{1}{2}$ miles.



MISSED APPROACH: Climbing left turn to 3000 and intercept DWG TACAN R-183 direct TUFER/12 DME and hold.

ATIS * 134.625 273.5	APP CON 125.1 281.45 271°-089° 132.1 360.6 090°-270°	TOWER 118.2 353.65	GND CON 121.8 335.8	CLNC DEL 127.7 377.2
-------------------------	--	-----------------------	------------------------	-------------------------



SE-3, 15 MAY 2025 to 12 JUN 2025

SE-3, 15 MAY 2025 to 12 JUN 2025

		<table border="1"> <tr> <td>ELEV 84</td> <td>TDZE 68</td> </tr> </table>		ELEV 84	TDZE 68
ELEV 84	TDZE 68				
<p>VGSI and descent angles not coincident (VGSI Angle 2.50/TCH 80).</p>		<p>MONJO DWG 12 One Minute Holding Pattern</p>			
CATEGORY	A	B	C	D	E
S-30 *	540/24	472 (500-1/2)	540/50	472 (500-1)	
CIRCLING	600-1	516 (600-1)	680-1 1/2 596 (600-1 1/2)	680-2 596 (600-2)	700-2 1/4 616 (700-2 1/4)
HIRL all rwys					

TACAN RWY 30