

# TACAN RWY 12

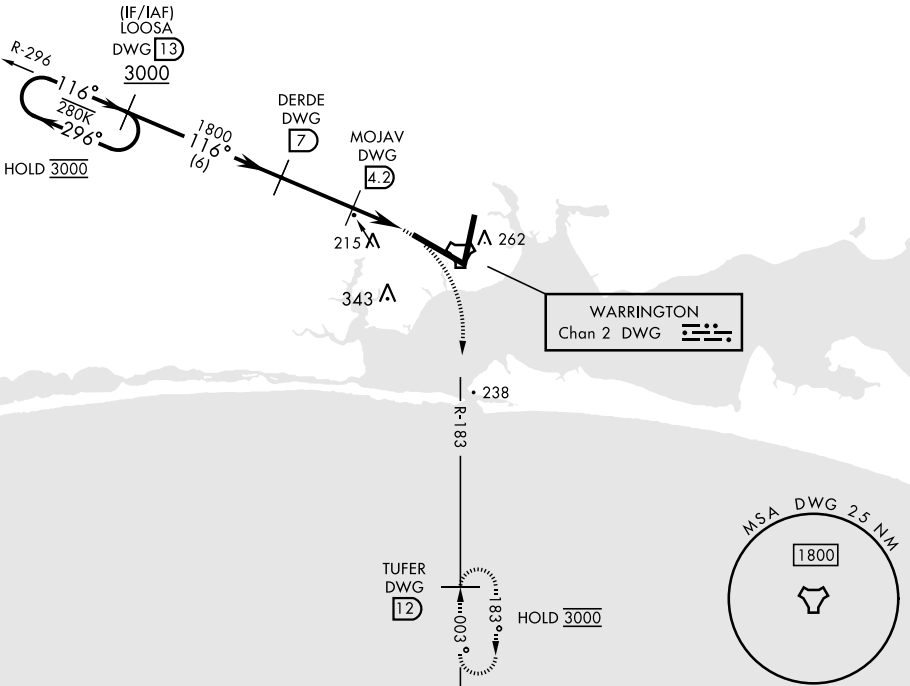
TACAN DWG Chan 2	APCH CRS 116°	Rwy Ldg TDZE 12,004 84	Arprt Elev 84
---------------------	------------------	------------------------------	------------------

[USAF] EGLIN AFB DESTIN FORT WALTON BEACH (KVPS)

MISSED APPROACH: Climb to 600, then climbing right turn to 3000 and intercept DWG TACAN R-183 to TUFER/12 DME and hold.

ATIS ★ 134.625 273.5	APP CON 125.1 281.45 271°-089° 132.1 360.6 090°-270°	TOWER 118.2 353.65	GND CON 121.8 335.8	CLNC DEL 127.7 377.2
-------------------------	--	-----------------------	------------------------	-------------------------

295



EMERG SAFE ALT 100 NM 3500

One Minute Holding Pattern	LOOSA DWG 13	DERDE DWG 7	MOJAV DWG 4.2	LEDKE DWG 2.2	DWG TACAN	ELEV 84	TDZE 84
	3000 ← 296°	← 116°	← 116°	← 1800	← 920	↑ Rwy 20 apch lgt 1500' nonstandard.	
	3000	1800	920	600	3000	116°	
		3.00° TCH 50					
		← 2.8 NM	← 2.0 NM	← 0.5 NM			
CATEGORY	A	B	C	D	E		
S-12	520/55	436 (500-1)	520-1¼	436 (500-1¼)			
CIRCLING	600-1	516 (600-1)	680-1½ 596 (600-1½)	680-2 596 (600-2)	700-2¼ 616 (700-2¼)		
						HIRL all rwys	

# TACAN RWY 12

SE-3, 15 MAY 2025 to 12 JUN 2025

SE-3, 15 MAY 2025 to 12 JUN 2025