

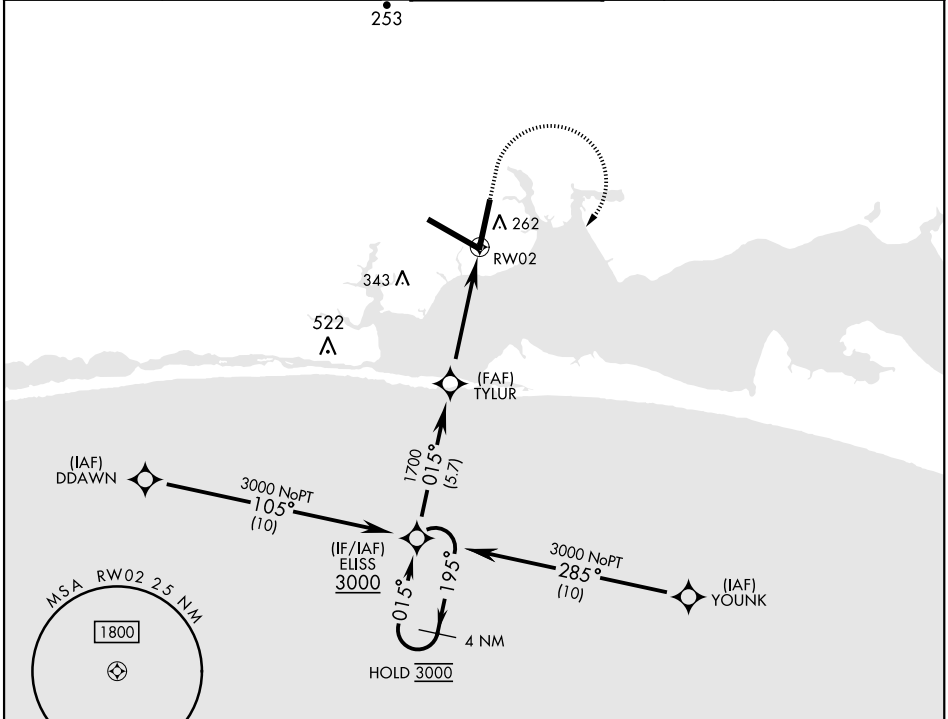
# RNAV (GPS) RWY 2

APCH CRS	Rwy ldg	10,012
015°	TDZE	59
	Arpt Elev	84

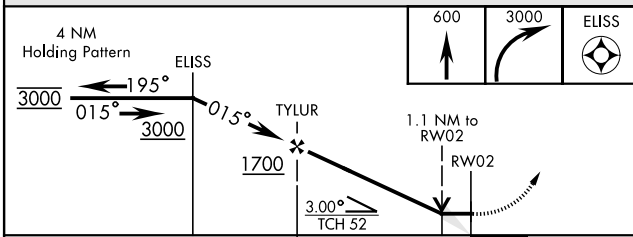
[USAF] EGLIN AFB DESTIN FORT WALTON BEACH (KVPS)

RNP APCH- GPS	ALSIF-1	MISSED APPROACH: Climb to 600, then climbing right turn to 3000 direct ELISS and hold.
* When ALS inop, increase CAT AB RVR to 55 and vis to 1 mile, CAT CDE RVR to 60, vis to 1 1/8 miles.		

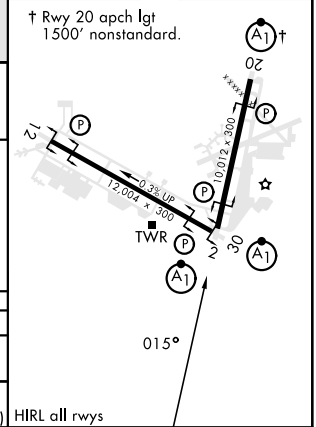
ATIS ★	APP CON	TOWER	GND CON	CLNC DEL
134.625 273.5	125.1 281.45 271°-089° 132.1 360.6 090°-270°	118.2 353.65	121.8 335.8	127.7 377.2



EMERG SAFE ALT 100 NM 3500



ELEV	84	TDZE	59
------	----	------	----



CATEGORY	A	B	C	D	E
LNAV MDA*	460/24	401 (400-34)	460/40	401 (400-34)	
CIRCLING	600-1	516 (600-1)	680-1 1/2 596 (600-1 1/2)	680-2 596 (600-2)	700-2 1/4 616 (700-2 1/4)

HIRL all rwys

# RNAV (GPS) RWY 2

SE-3, 15 MAY 2025 TO 12 JUN 2025

SE-3, 15 MAY 2025 TO 12 JUN 2025