

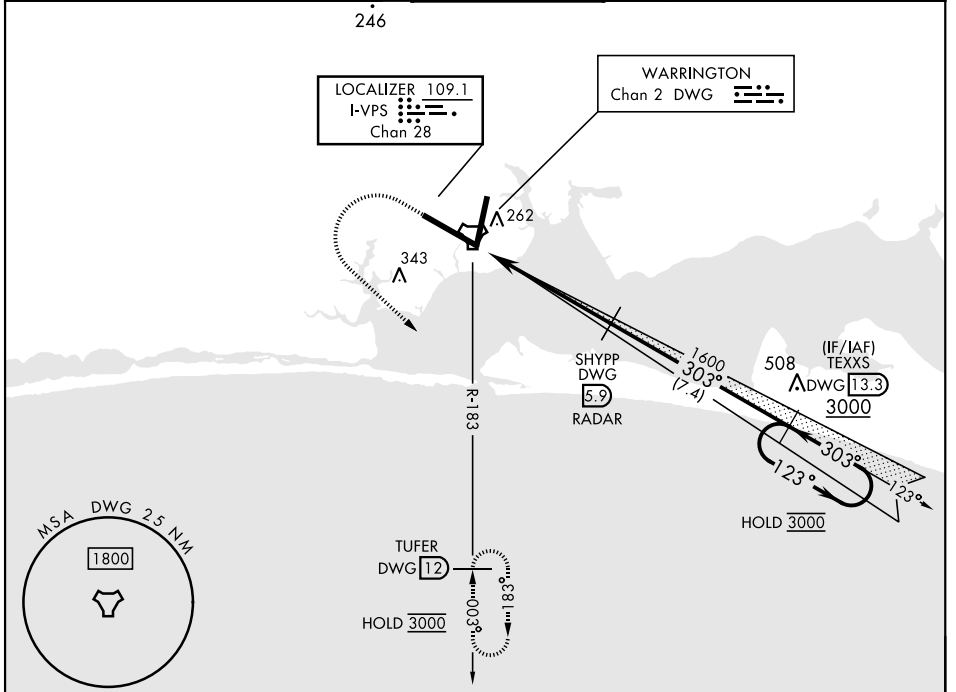
ILS or LOC Y RWY 30

[USAF] EGLIN AFB DESTIN FORT WALTON BEACH (KVPS)

LOC/DME I-VPS 109.1 Chan 28	APCH CRS 303°	Rwy Idg 12,004 TDZE 68 Arprt Elev 84
---	-------------------------	---

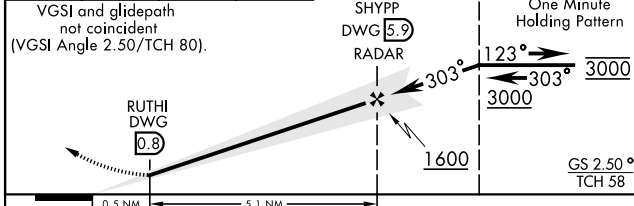
DME required	ALSF-1 	MISSED APPROACH: Climb to 600, then climbing left turn to 3000 and intercept DWG TACAN R-183 to TUFER/12 DME and hold.
*When ALS inop, increase RVR to 40, vis to 3/4 mile. **When ALS inop increase CAT AB RVR to 55, vis to 1 mile; CAT CDE RVR to 50, vis to 1 mile.		

ATIS ★ 134.625 273.5	APP CON 125.1 281.45 271°-089° 132.1 360.6 090°-270°	TOWER 118.2 353.65	GND CON 121.8 335.8	CLNC DEL 127.7 377.2
--------------------------------	--	------------------------------	-------------------------------	--------------------------------

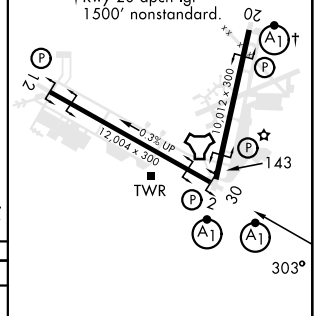


EMERG SAFE ALT 100 NM 3500

600	3000	TUFER DWG 12
-----	------	---------------------



ELEV 84	TDZE 68
----------------	----------------



CATEGORY	A	B	C	D	E
S-ILS 30 *	268/24		200	(200-1/2)	
S-LOC 30 **	400/24	332 (400-1/2)	400/26	332	(400-1/2)
C CIRCLING	600-1	516 (600-1)	680-1 1/2 596 (600-1 1/2)	680-2 596 (600-2)	700-2 1/4 616 (700-2 1/4)

HIRL all rwys					
FAF to MAP 5.1 NM					
Knots	60	90	120	150	180
Min:Sec	5:06	3:24	2:33	2:02	1:42

ILS or LOC Y RWY 30

SE-3, 15 MAY 2025 to 12 JUN 2025

SE-3, 15 MAY 2025 to 12 JUN 2025