

# HI-TACAN Z RWY 36L

TACAN VAD Chan <b>80</b>	APCH CRS <b>010°</b>	Rwy ldg TDZE Arprt Elev <b>8002</b> <b>225</b> <b>233</b>
-----------------------------	-------------------------	--

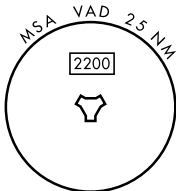
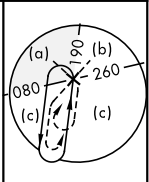
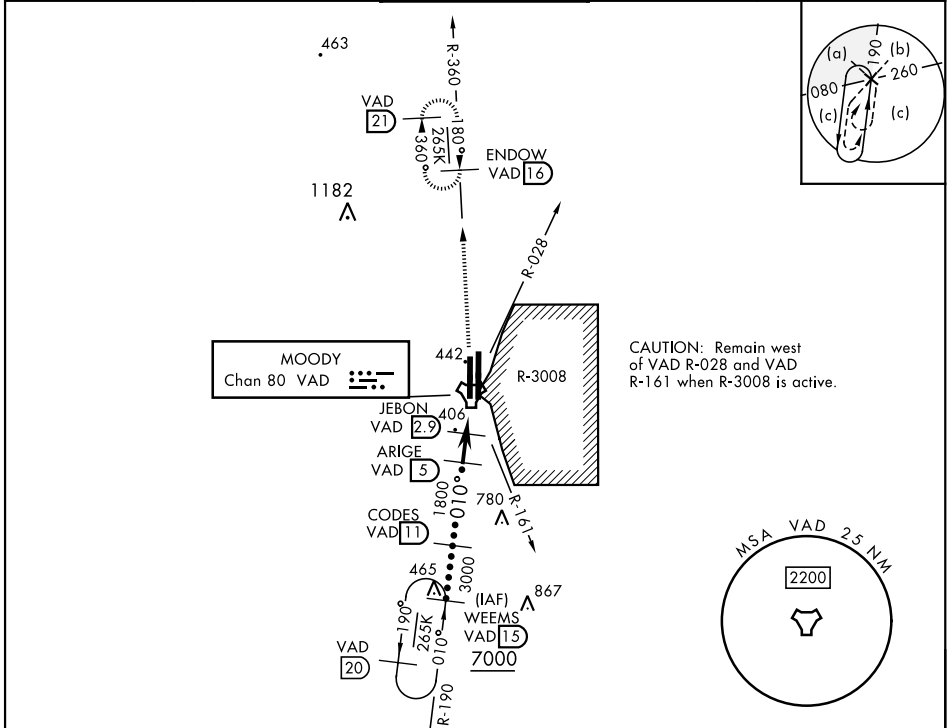
[USAF]

MOODY AFB (KVAD)

V \* When ALS inop, increase vis to 1¼ miles.
 
 MALS  
A4

 MISSED APPROACH: Climb to 3000 on  
 VAD TACAN R-360 to ENDOW and hold.

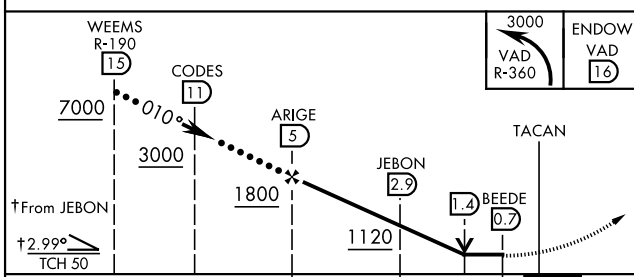
ATIS ★ <b>273.5</b>	VALDOSTA APP CON <b>126.6 285.6</b>	TOWER ★ <b>128.45</b> (CTAF) <b>257.625</b>	GND CON <b>138.95 275.8</b>	CLNC DEL <b>120.625 296.7</b>
------------------------	--	--	--------------------------------	----------------------------------



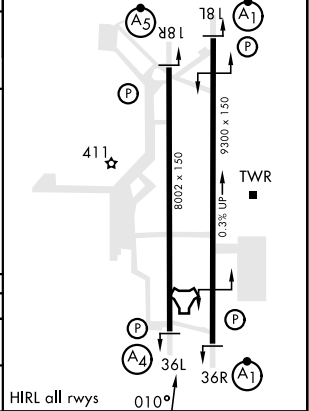
SE-4, 15 MAY 2025 to 12 JUN 2025

SE-4, 15 MAY 2025 to 12 JUN 2025

EMERG SAFE ALT 100 NM 3300



ELEV	233	TDZE	225
------	-----	------	-----



CATEGORY	C	D	E
S-36L *	660/50 435 (500-1)		
CIRCLING	760-1½ 527 (600-1½)	800-2	567 (600-2)

# HI-TACAN Z RWY 36L