

WAAS CH 53733 W36A	APP CRS 005°	Rwy Idg TDZE Apt Elev	5108 624 624
--	------------------------	-----------------------------	---

RNAV (GPS) RWY 36

CHERRY CAPITAL (TVC)

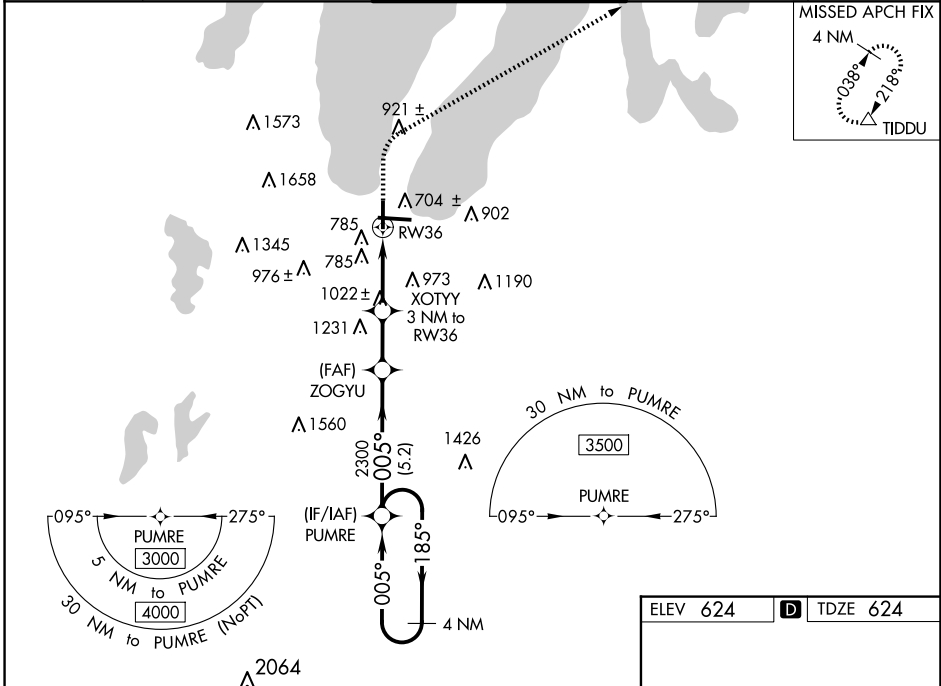
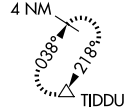
RNP APCH - GPS.

⚠ Baro-VNAV NA when using ACB altimeter setting. For uncompensated Baro-VNAV systems, LNAV/VNAV NA below -16°C or above 54°C. When local altimeter setting not received use ACB altimeter setting: increase all DA 51 feet and all MDA 60 feet, increase LNAV/VNAV all Cats and Circling Cat C visibilities ¼ SM, and increase LPV all Cats, LNAV Cat C/D and Circling Cat D visibilities ½ SM. Helicopter visibility reduction below ¾ SM NA.

MISSED APPROACH:
Climb to 1400 then climbing right turn to 3000 direct TIDDU and hold.

ATIS 119.175	MINNEAPOLIS CENTER 132.9 338.3	TRAVERSE CITY TOWER * 124.2(CTAF) 0 348.6	GND CON 121.8 348.6	UNICOM 122.95
------------------------	--	---	-------------------------------	-------------------------

MISSED APCH FIX

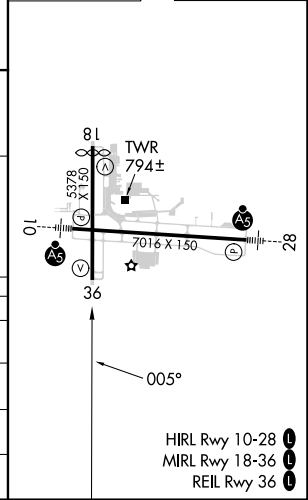
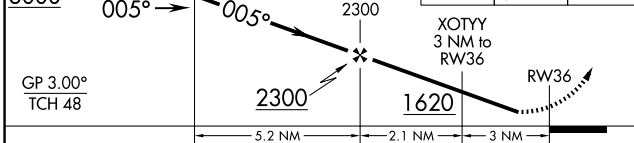


EC-1, 15 MAY 2025 to 12 JUN 2025

EC-1, 15 MAY 2025 to 12 JUN 2025

ELEV 624	D TDZE 624
----------	-------------------

4 NM VGSI and RNAV glidepath not coincident (VGSI Angle 3.50/TCH 53). Holding Pattern	1400	3000	TIDDU
--	------	------	-------



CATEGORY	A	B	C	D
LPV DA		899-7/8	275 (300-7/8)	
LNAV/VNAV DA		1146-1 1/4	522 (600-1 1/4)	
LNAV MDA	1280-1	656 (700-1)	1280-1 7/8	656 (700-1 7/8)
C CIRCLING	1280-1	656 (700-1)	1500-2 1/2 876 (900-2 1/2)	1720-3 1096 (1100-3)

HIRL Rwy 10-28
MIRL Rwy 18-36
REIL Rwy 36