

WAAS CH 97535	APP CRS 279°	Rwy Idg TDZE Apt Elev	7016 616 624
W28A			

RNAV (GPS) RWY 28

CHERRY CAPITAL (TVC)

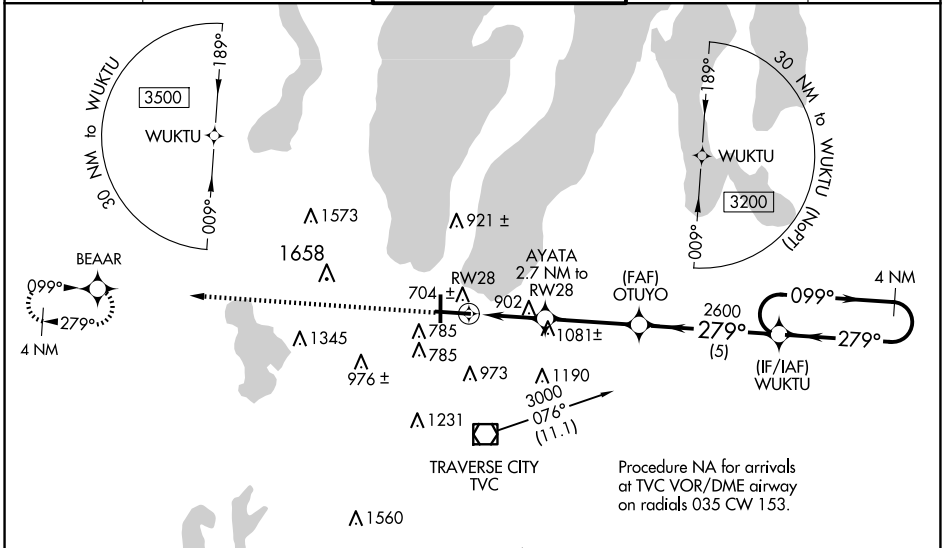
RNP APCH - GPS.

▼ For uncompensated Baro-VNAV systems, LNAV/VNAV NA below -19°C or above 54°C.
 ▲ Baro-VNAV and VDP NA when using ACB altimeter setting. When local altimeter setting not received, use ACB altimeter setting: increase DA 51 feet and all MDA 60 feet. Increase LPV all Cats visibility 1/8 SM, LNAV/VNAV visibility all Cats 1/4 SM and LNAV Cat B visibility 1/4 SM and C/D visibilities 1/8 SM and Circling Cat B/C visibility 1/4 SM. For inop ALS, increase LPV all Cats visibility to 1 1/4 SM, LNAV Cats C/D visibility to 2 SM. For inop ALS when using ACB altimeter setting, increase LPV all Cats visibility to 1 1/2 SM, LNAV Cats C/D visibility to 2 1/2 SM. *Missed approach requires minimum climb of 237 feet per NM to 2000.

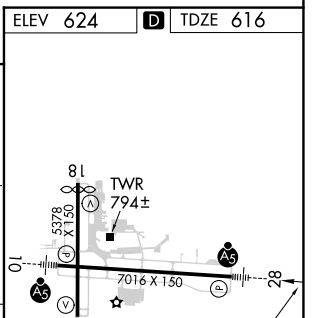
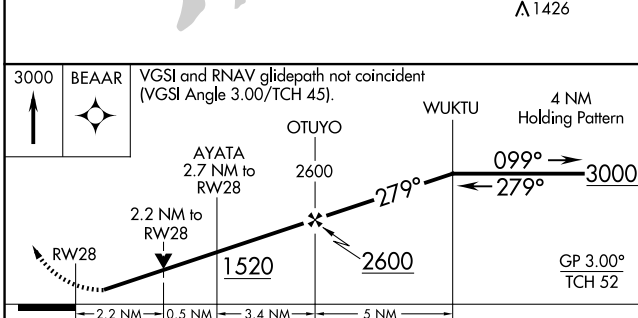
MALS R

MISSED APPROACH: Climb to 3000 direct BEAAR and hold.

ATIS 119.175	MINNEAPOLIS CENTER 132.9 338.3	TRAVERSE CITY TOWER * 124.2(CTAF) 348.6	GND CON 121.8 348.6	UNICOM 122.95
------------------------	--	---	-------------------------------	-------------------------



Procedure NA for arrivals at TVC VOR/DME airway on radials 035 CW 153.



CATEGORY	A	B	C	D
LPV DA		* 816-1/2	200 (200-1/2)	
LPV DA		963-7/8	347 (400-7/8)	
LNAV/VNAV DA		1330-2	714 (800-2)	
LNAV MDA	1340-1/2	724 (800-1/2)	1340-15/8	724 (800-15/8)
CIRCLING	1340-1	716 (800-1)	1500-2 1/2 876 (900-2 1/2)	1720-3 1096 (1100-3)

ELEV 624	TDZE 616
----------	----------

HIRL Rwy 10-28
 MIRL Rwy 18-36
 REIL Rwy 36

EC-1, 15 MAY 2025 to 12 JUN 2025

EC-1, 15 MAY 2025 to 12 JUN 2025