

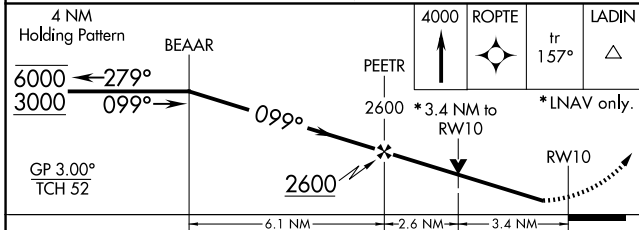
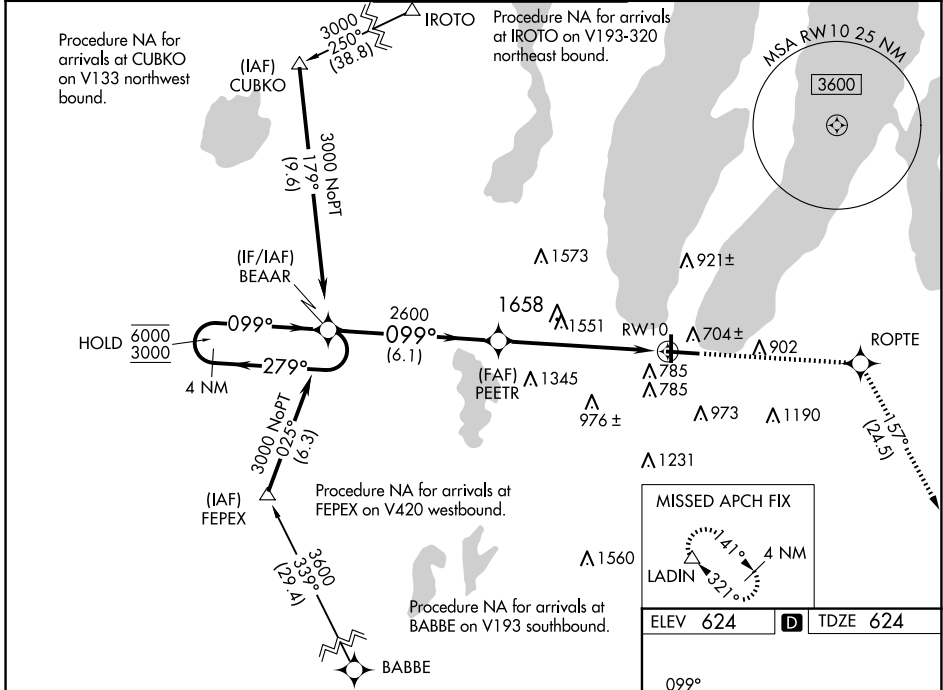
WAAS CH 42610 W10A	APP CRS 099°	Rwy Idg 7016 TDZE 624 Apt Elev 624
--	------------------------	---

RNAV (GPS) RWY 10

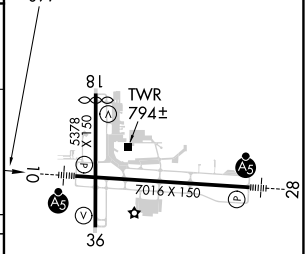
CHERRY CAPITAL (TVC)

RNP APCH.	MALSRL AS	MISSED APPROACH: Climb to 4000 direct ROPTe and on track 157° to LADIN and hold.
<p>⚠ For uncompensated Baro-VNAV systems, LNAV/VNAV NA below -19°C (-2°F) or above 54°C (130°F). Rwy 10 helicopter visibility reduction below ¾ SM NA. For inop ALS, increase LPV visibility all Cats ½ SM. Inop table does not apply to LNAV/VNAV all Cats and LNAV Cats C/D.</p>		

ATIS 119.175	MINNEAPOLIS CENTER 132.9 338.3	TRAVERSE CITY TOWER* 124.2 (CTAF) 0 348.6	GND CON 121.8 348.6	UNICOM 122.95
------------------------	--	---	-------------------------------	-------------------------



CATEGORY	A	B	C	D
LPV DA	909-¾		285 (300-¾)	
LNAV/VNAV DA	1983-5		1359 (1400-5)	
LNAV MDA	1780-¾ 1156 (1200-¾)	1780-1 1156 (1200-1)	1780-3	1156 (1200-3)
CIRCLING	1780-1¼ 1156 (1200-1¼)	1780-1½ 1156 (1200-1½)	1780-3	1156 (1200-3)



EC-1, 15 MAY 2025 to 12 JUN 2025

EC-1, 15 MAY 2025 to 12 JUN 2025