

LOC I-TVC <b>110.7</b>	APP CRS <b>279°</b>	Rwy Idg 7016
		TDZE 616
		Apt Elev 624

# ILS or LOC RWY 28

CHERRY CAPITAL (TVC)

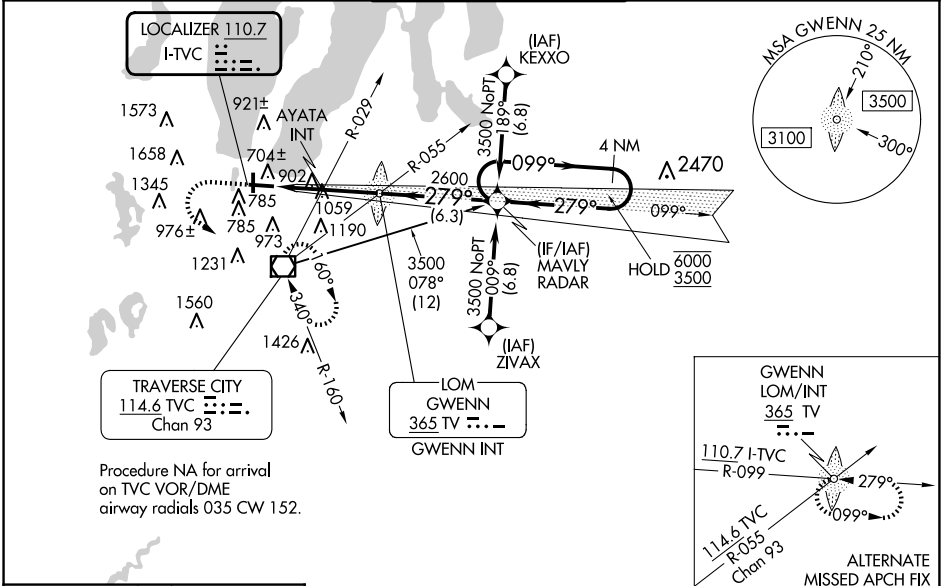
RNP APCH - GPS.

Aircraft not GPS equipped - RADAR required for procedure entry.

**MALS R**

MISSED APPROACH: Climb to 1100 then climbing left turn to 3000 direct TVC VOR/DME and hold, continue climb-in-hold to 3000.

ATIS <b>119.175</b>	MINNEAPOLIS CENTER <b>132.9 338.3</b>	TRAVERSE CITY TOWER * <b>124.2 (CTAF) 348.6</b>	GND CON <b>121.8 348.6</b>	UNICOM <b>122.95</b>
------------------------	--	--	-------------------------------	-------------------------



ELEV 624	<b>D</b>	TDZE 616
----------	----------	----------

HIRL Rwy 10-28

MIRL Rwy 18-36

REIL Rwy 36

FAF to MAP 5.8 NM

Knots	60	90	120	150	180
Min:Sec	5:48	3:52	2:54	2:19	1:56

VGSI and ILS glidepath not coincident (VGSI Angle 3.00/TCH 45).

1100	3000	TVC	
TV LOM GWENN INT		MAVLY RADAR	4 NM Holding Pattern
2.7 NM	3 NM	6.3 NM	
CATEGORY	A	B	C
S-ILS 28	816-1/2 200 (200-1/2)		
S-LOC 28	1440-1/2 824 (900-1/2)	1440-3/4 824 (900-3/4)	1440-1 7/8 824 (900-1 7/8)
<b>C</b> CIRCLING	1440-1 1/4	816 (900-1 1/4)	1440-2 1/2 816 (900-2 1/2) 1720-3 1096 (1100-3)
AYATA FIX MINIMUMS (DUAL VOR RECEIVERS REQUIRED)			
S-LOC 28	1320-1/2	704 (700-1/2)	1320-1 5/8 704 (700-1 5/8)
<b>C</b> CIRCLING	1320-1	696 (700-1)	1420-2 1/4 796 (800-2 1/4) 1720-3 1096 (1100-3)

EC-1, 15 MAY 2025 to 12 JUN 2025

EC-1, 15 MAY 2025 to 12 JUN 2025