

WHYTE SEVEN ARRIVAL

NW-1, 15 MAY 2025 to 12 JUN 2025

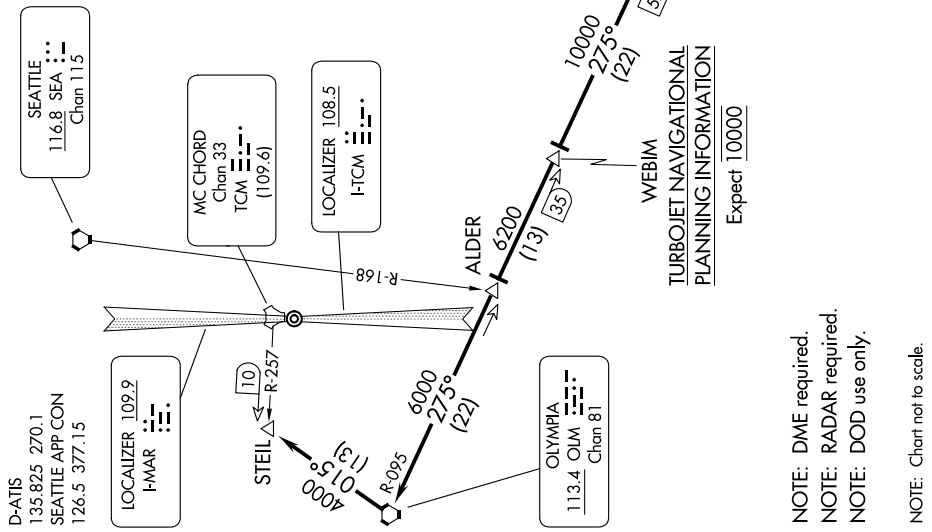
ARRIVAL ROUTE DESCRIPTION

PENDLETON TRANSITION (PDT.WHYTE7): From over PDT VORTAC on PDT R-282 and OLM R-095 to WHYTE. Thence, . . . YAKIMA TRANSITION (YKM.WHYTE7): From over YKM VORTAC on YKM R-250 to WHYTE. Thence, . . .

. . . From over WHYTE on OLM R-095 to WEBIM, then on OLM R-095 to ALDER. Thence, . . .

RUNWAY 34: Expect ILS or LOC RWY 34 or ILS RWY 34 (CAT III) approach.

RUNWAY 16: On OLM R-095 to OLM VORTAC, then on OLM R-015 to STEIL, expect ILS or LOC Z RWY 16 or TACAN RWY 16 approach.



TURBOJET NAVIGATIONAL PLANNING INFORMATION
Expect 10000

- NOTE: DME required.
- NOTE: RADAR required.
- NOTE: DOD use only.

NOTE: Chart not to scale.

WHYTE SEVEN ARRIVAL

NW-1, 15 MAY 2025 to 12 JUN 2025