

TACAN RWY 16

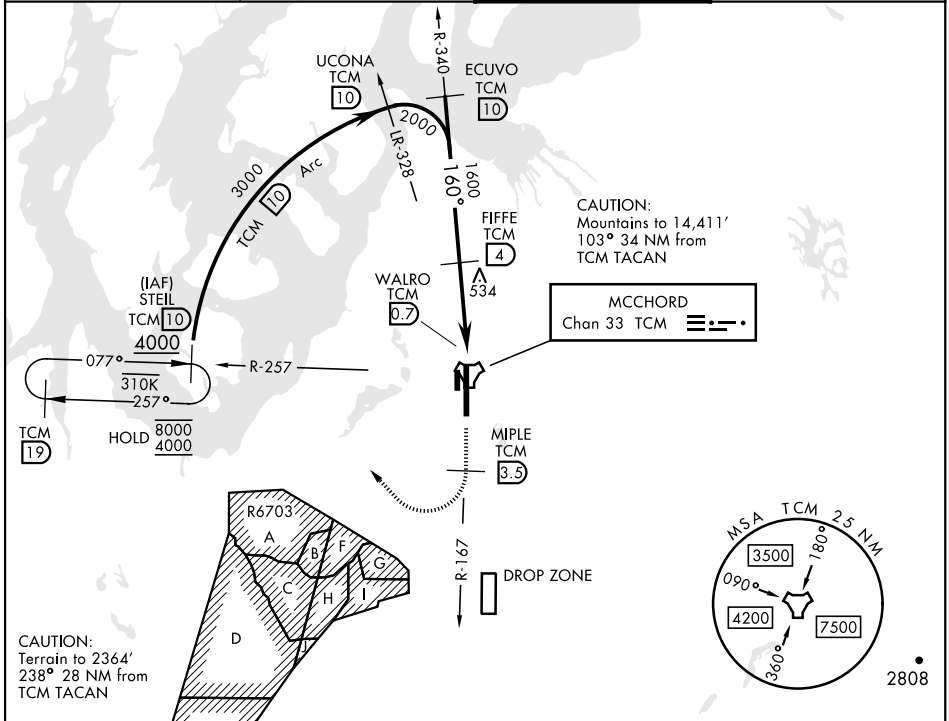
TACAN TCM Chan 33	APCH CRS 160°	Rwy Idg 10,108 TDZE 286 Arpt Elev 322
-----------------------------	-------------------------	--

[USAF]

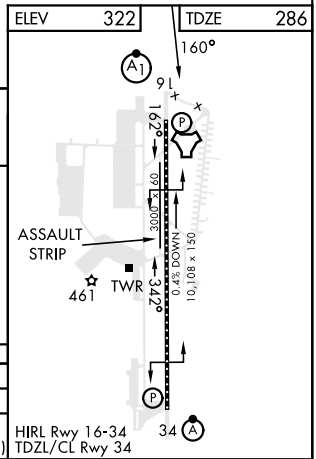
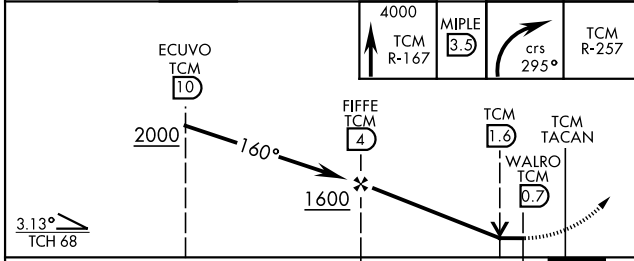
MCCHORD FLD (KTCM)

A1 **ALSIF-1**
MISSED APPROACH: Climb to 4000 on TCM TACAN R-167. At TCM 3.5 DME turn right via 295° course to intercept TCM R-257 to STEIL and hold, continue climb-in-hold to 4000.
 * When ALS inop, increase CAT AB RVR to 55, vis to 1 mile, CAT CDE vis to 1 1/2 miles.
 ** Circling not authorized E of Rwy 16-34.

ATIS 135.825 270.1	SEATTLE APP CON 126.5 377.15	TOWER 124.8 259.3	GND CON 118.175 279.65
------------------------------	--	-----------------------------	----------------------------------



ELEV 322	TDZE 286
----------	----------



CATEGORY	A	B	C	D	E
S-16 *	800/24	514 (500-1/2)	800/55	514	(500-1)
CIRCLING **	940-1 618 (700-1)	940-1 1/4 618 (700-1 1/4)	940-2 618 (700-2)	1020-2 1/2 698 (700-2 1/2)	1020-2 1/2 698 (700-2 1/2)

TACOMA, WASHINGTON 47°08'N-122°29'W MCCHORD FLD (KTCM)

Amtd 4 20APR23

TACAN RWY 16

NW-1, 15 MAY 2025 to 12 JUN 2025

NW-1, 15 MAY 2025 to 12 JUN 2025