

ATIS
 135.825 270.1
 GND CON
 118.175 279.65
 TOWER
 124.8 259.3
 SEATTLE DEP CON
 126.5 377.15

If unable to make ATC charted crossing restriction advise ATC prior to departure.

RADAR REQUIRED

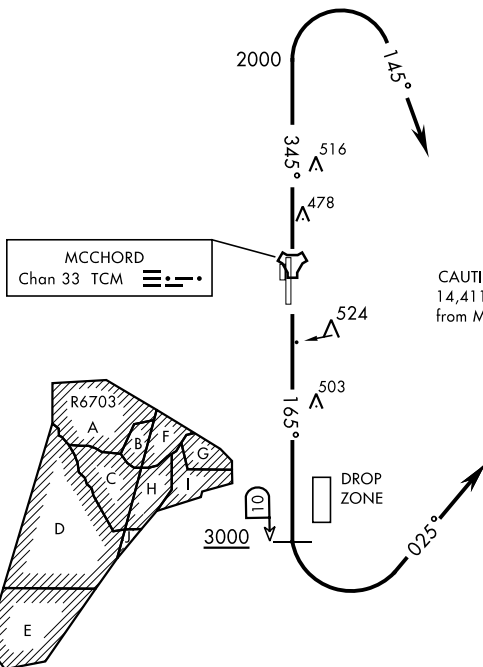
Maximum 250 KIAS

Radar vectors required within 10 NM after departure.



SEATTLE
 116.8 SEA
 Chan 115

L-1



MCCHORD
 Chan 33 TCM

CAUTION: Mountains to
 14,411 ft 103° 34 NM
 from McChord.

OLYMPIA
 113.4 OLM
 Chan 81

DEPARTURE ROUTE DESCRIPTION

TAKEOFF RWY 16: Climb on track 165° to cross TCM TACAN 10 DME at or above 3000. Then turn left tracking 025° to expect radar vectors. Maintain ATC assigned altitude.

TAKEOFF RWY 34: Climb on track 345° to 2000, then turn right tracking 145° to expect radar vectors. Maintain ATC assigned altitude.