

TACOMA, WASHINGTON

ILS or LOC RWY 34

MCCHORD FLD (KTCM)

LOC I-TCM 108.5	APCH CRS 345°	Rwy Idg TDZE Arprt Elev 10,108 322 322
---------------------------	-------------------------	--

[USAF]

RADAR or DME required.

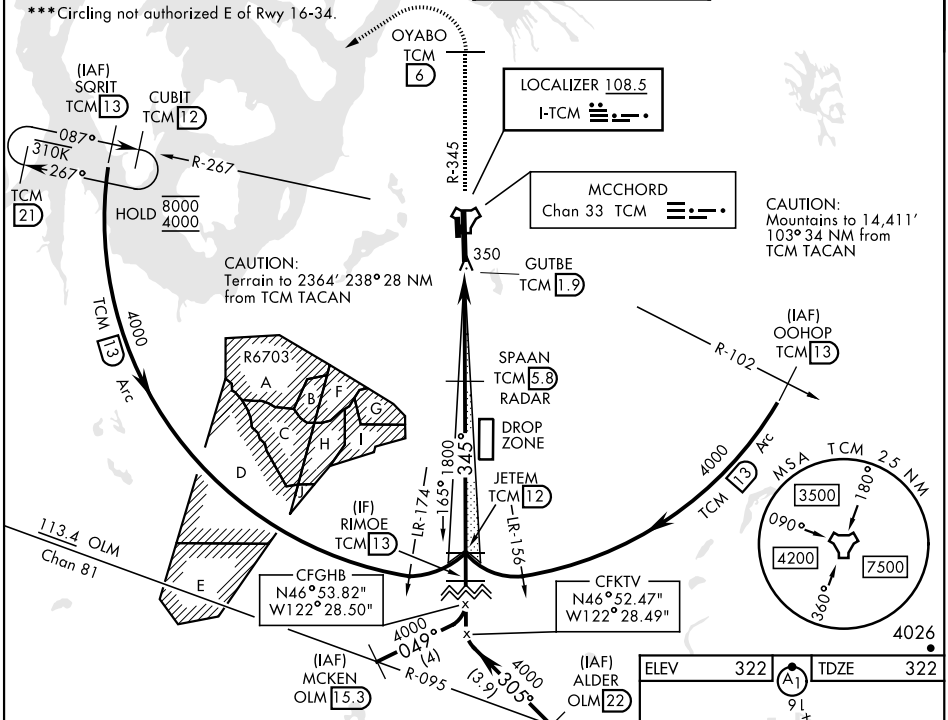
- * When ALS inop, increase RVR to 40, vis to 3/4 mile. When TDZ/CL lights inop increase RVR to 24.
- ** When ALS inop, increase CAT AB RVR to 55, vis to 1 mile, CAT CD vis to 1 1/2 miles.

ALS#-2

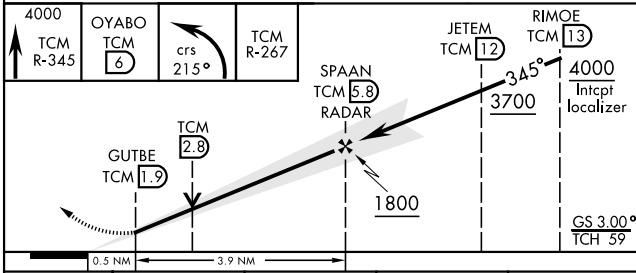


MISSED APPROACH: Climb to 4000 on TCM TACAN R-345 to OYABO, then turn left via 215° course to intercept TCM R-267 to CUBIT and hold, continue climb-in-hold to 4000. Cross OYABO at or above 3000.

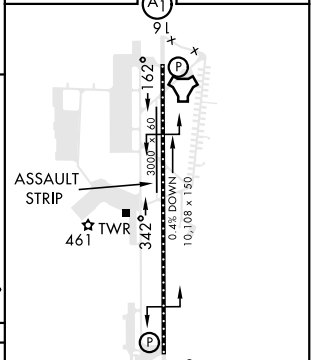
ATIS 135.825 270.1	SEATTLE APP CON 126.5 377.15	TOWER 124.8 259.3	GND CON 118.175 279.65
------------------------------	--	-----------------------------	----------------------------------



EMERG SAFE ALT 100 NM 16,600



ELEV 322	(A1)	TDZE 322
----------	------	----------



CATEGORY	A	B	C	D
S-ILS 34*	522/18 200		(200-1/2)	
S-LOC 34**	860/40	538 (600-3/4)	860/55	538 (600-1)
CIRCLING ***	940-1	618 (700-1)	940-1 3/4 618 (700-1 3/4)	940-2 618 (700-2)

HIRL Rwy 16-34 TDZL/CL Rwy 34	FAF to MAP 3.9 NM				
Knots	60	90	120	150	180
Min:Sec	3:54	2:36	1:57	1:34	1:18

TACOMA, WASHINGTON

47°08'N-122°29'W

MCCHORD FLD (KTCM)

Amtd 5 30NOV23

ILS or LOC RWY 34

NW-1, 15 MAY 2025 to 12 JUN 2025

NW-1, 15 MAY 2025 to 12 JUN 2025