

TACOMA, WASHINGTON

ILS RWY 34 (CAT II)

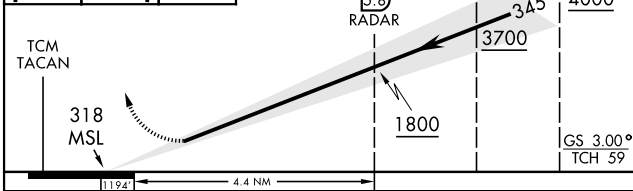
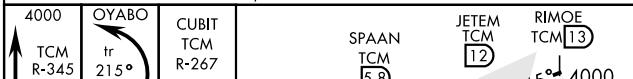
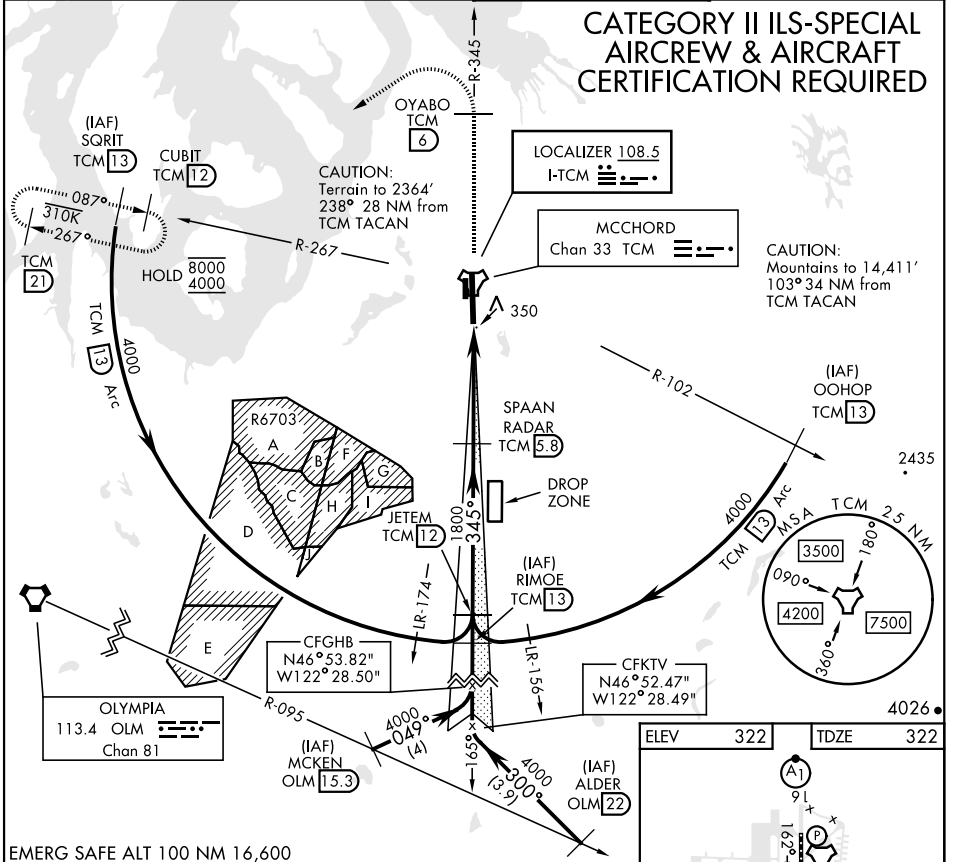
MCCORD FLD (KTCM)

LOC I-TCM 108.5	APCH CRS 345°	Rwy Idg TDZE Arprt Elev 10,108 322 322
---------------------------	-------------------------	--

[USAF]

ALSF-2 MISSED APPROACH: Climb to 4000 on TCM TACAN R-345 to OYABO, then turn left via 215° course to intercept TCM R-267 and hold, continue climb in hold to 4000. Cross OYABO at or above 3000.

ATIS 135.825 270.1	SEATTLE APP CON 126.5 377.15	TOWER 124.8 259.3	GND CON 118.175 279.65
------------------------------	--	-----------------------------	----------------------------------



ELEV 322	TDZE 322
----------	----------

CATEGORY	A	B	C	D	E
S-ILS 34	RA 139/12		100	DA 422	

TACOMA, WASHINGTON

47°08'N-122°29'W

MCCORD FLD (KTCM)

Amdt 4 10SEP20

ILS RWY 34 (CAT II)

NW-1, 15 MAY 2025 to 12 JUN 2025

NW-1, 15 MAY 2025 to 12 JUN 2025