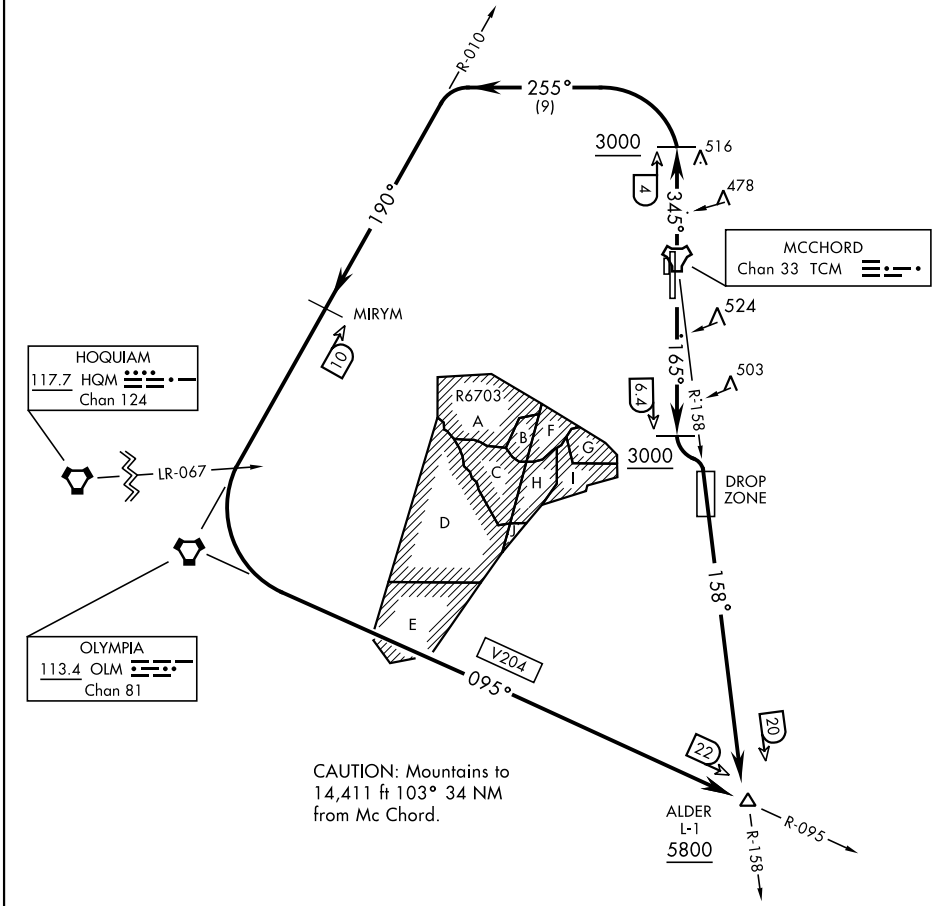


ATIS  
 135.825 270.1  
 GND CON  
 118.175 279.65  
 TOWER  
 124.8 259.3  
 SEATTLE DEP CON  
 126.5 377.15

AL-414 [USAF]

If unable to make ATC charted crossing restrictions advise ATC prior to departure.



NW-1, 15 MAY 2025 to 12 JUN 2025

NW-1, 15 MAY 2025 to 12 JUN 2025

DEPARTURE ROUTE DESCRIPTION

TAKEOFF RWY 16: Climb on track 165° to cross TCM TACAN 6.4 DME, at or above 3000. Then turn left to intercept TCM R-158 to cross ALDER at or above 5800.

TAKEOFF RWY 34: Climb on track 345° to cross TCM TACAN 4 DME at or above 3000. Then turn left heading 255° to intercept OLM VORTAC R-010 MIRYM then OLM. Then via V204 to cross ALDER at or above 5800.