

LOC/DME I-MNQ 110.35 Chan 40(Y)	APP CRS 142°	Rwy ldg 9197 TDZE 6 Apt Elev 37
--	------------------------	--

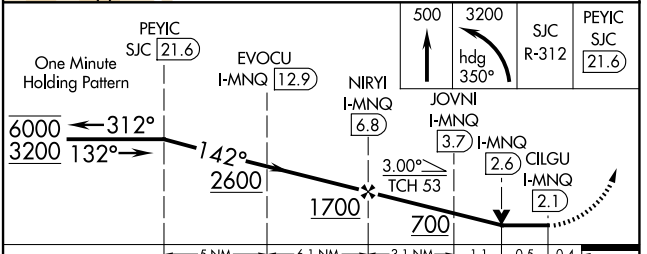
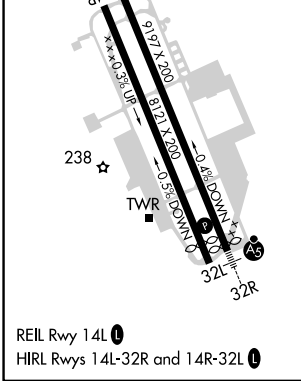
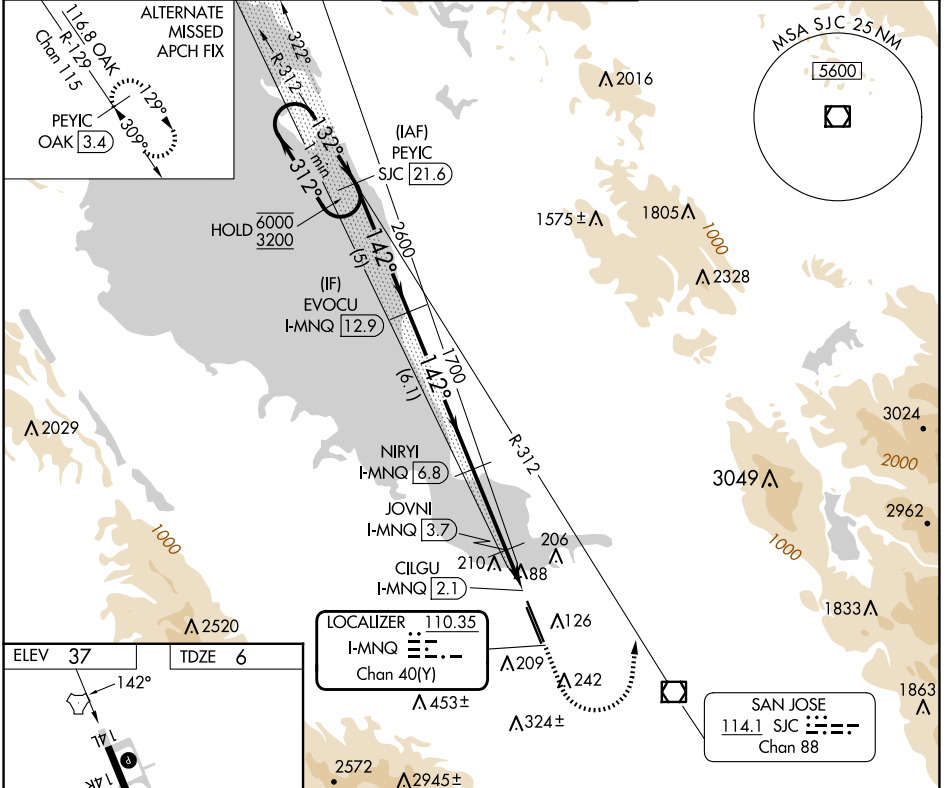
LOC RWY 14L

MOFFETT FEDERAL AIRFIELD (NUQ)

DME required. RADAR required for procedure entry.

MISSED APPROACH: Climb to 500 then climbing left turn to 3200 on heading 350° and SJC VOR/DME R-312 to PEVIC/SJC 21.6 DME and hold.

ATIS 124.175 283.0	NORCAL APP CON 120.1 290.25	MOFFETT TOWER ★ 119.55 (CTAF) 259.65	GND CON 121.85 278.95	CLNC DEL 296.75
------------------------------	---------------------------------------	---	---------------------------------	---------------------------



CATEGORY	A	B	C	D
S-LOC 14L	360-1 354 (400-1)			
CIRCLING	540-1 503 (600-1)	600-1 563 (600-1)	620-1½ 583 (600-1½)	780-2½ 743 (800-2½)

SW-2, 15 MAY 2025 to 12 JUN 2025

SW-2, 15 MAY 2025 to 12 JUN 2025