

LOC/DME I-SCK 109.1 Chan 28	APP CRS 294°	Rwy Idg TDZE Apt Elev	8650 32 33
--	------------------------	-----------------------------	---------------------------------------

ILS RWY 29R (SA CAT II)

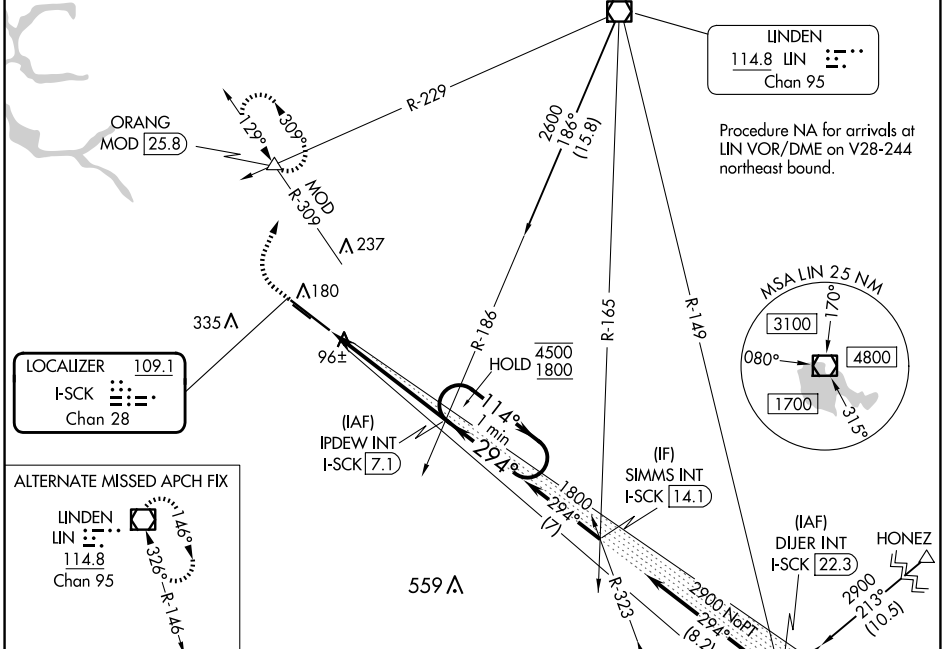
STOCKTON METRO (SCK)

Reduced lighting: requires specific OPSPEC, MSPEC, or LOA approval and use of autoland or HUD to touchdown. Procedure NA when tower closed.

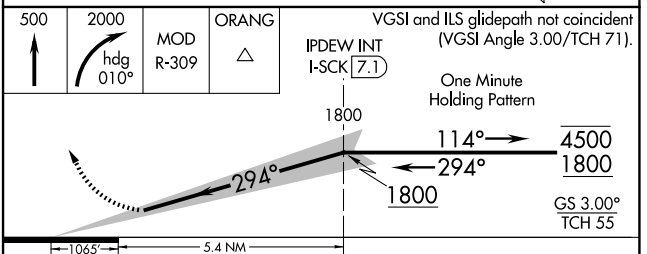
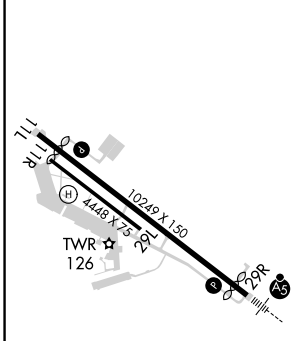
MALSRR 

MISSED APPROACH: Climb to 500 then climbing right turn to 2000 on heading 010° and MOD VOR/DME R-309 to ORANG INT/MOD 25.8 DME and hold.

ATIS 118.25	NORCAL APP CON (SE-NW) 123.85 278.3 (N-SE) 125.1 363.2	STOCKTON TOWER ★ 120.3 (CTAF) 0 239.0	GND CON 121.9	UNICOM 122.95
-----------------------	--	---	-------------------------	-------------------------



ELEV 33	D	TDZE 32
---------	----------	---------



CATEGORY	A	B	C	D
S-ILS 29R		RA 105/12	100 DA 132	

SA CATEGORY II ILS - SPECIAL AIRCREW & AIRCRAFT CERTIFICATION REQUIRED

SW-2, 15 MAY 2025 to 12 JUN 2025

SW-2, 15 MAY 2025 to 12 JUN 2025