

# RNAV (RNP) Z RWY 21

SPOKANE INTL (GEG)

APP CRS	Rwy Idg	<b>11002</b>
<b>212°</b>	TDZE	<b>2346</b>
	Apt Elev	<b>2385</b>

**RNP AR APCH.**

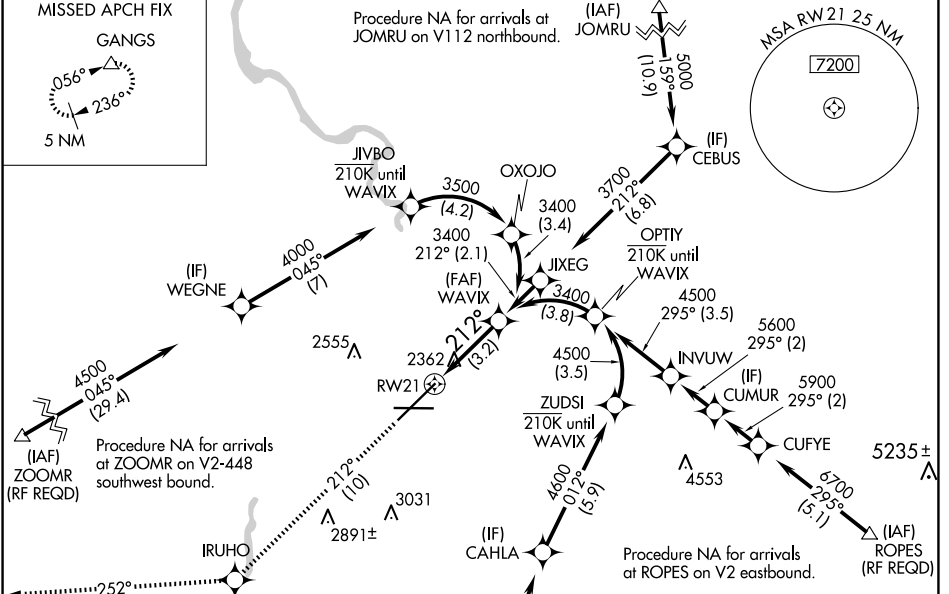
▼ For uncompensated Baro-VNAV systems, procedure NA below -19°C or above 43°C. For inop ALS increase RNP 0.11 visibility all Cats to ¾, RNP 0.15 visibility all Cats to 1½ and RNP 0.30 visibility all Cats to 1¾.

**ALSIF-2**

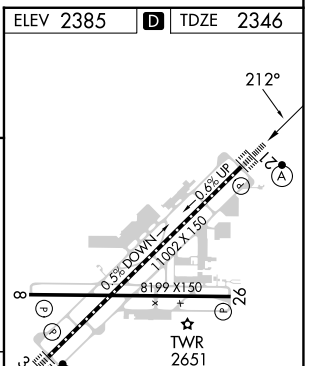
**MISSED APPROACH:** Climb to 5000 on track 212° to IRUHO and on track 252° to GANGS and hold.

\*Missed approach requires minimum climb of 310 feet per NM to 3000.

<b>ATIS</b>	<b>SPOKANE APP CON</b>	<b>SPOKANE TOWER</b>	<b>GND CON</b>	<b>CLNC DEL</b>
<b>124.325 254.375</b>	<b>123.75 282.25</b> (205°-025°) <b>133.35 263.0</b> (026°-204°)	<b>118.3 278.3</b>	<b>121.9 348.6</b>	<b>127.55</b>



5000	IRUHO	GANGS	VGSIs and RNAV glidepath not coincident (VGSIs Angle 3.00/TCH 73).
tr 212°	tr 252°	△	WAVIX
See planview for multiple IF locations.			
RWY 21			
GP 3.00° TCH 55			
3.2 NM			



CATEGORY	A	B	C	D
RNP 0.11 DA*		2596/24	250 (300-½)	
RNP 0.15 DA		2699/30	353 (400-⅝)	
RNP 0.30 DA		2752/45	406 (400-⅞)	

TDZ/CL Rws 3 and 21  
REIL Rws 8 and 26  
HIRL Rwy 3-21  
MIRL Rwy 8-26

## AUTHORIZATION REQUIRED

NW-1, 15 MAY 2025 to 12 JUN 2025

NW-1, 15 MAY 2025 to 12 JUN 2025