

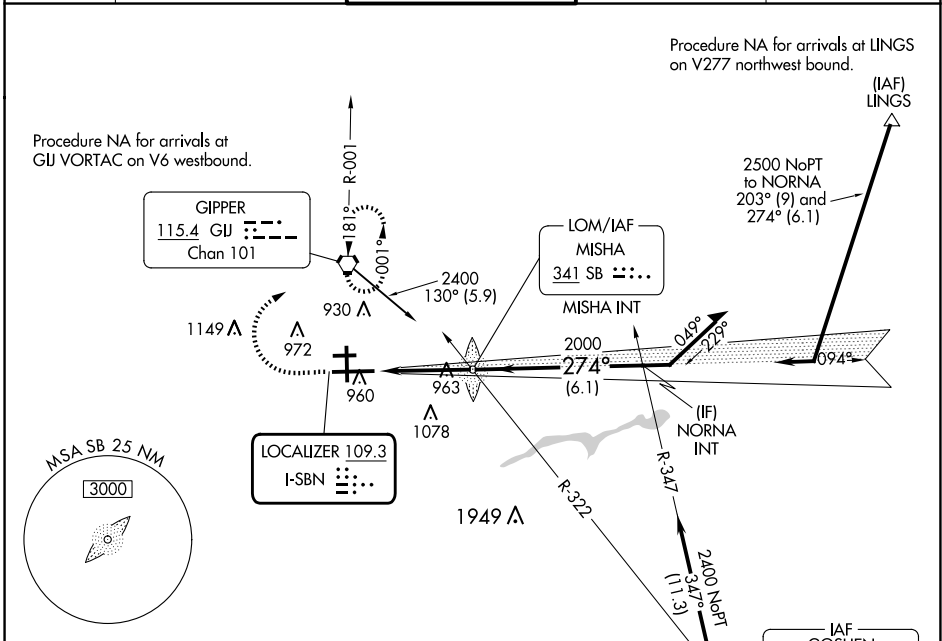
LOC I-SBN <b>109.3</b>	APP CRS <b>274°</b>	Rwy Idg TDZE Apt Elev	<b>8412</b> <b>774</b> <b>798</b>
---------------------------	------------------------	-----------------------------	---

# ILS RWY 27L (SA CAT I & II)

SOUTH BEND INTL (SBN)

<p>Procedure NA when tower closed. SA Cat I: Requires specific OPSPEC, MSPEC, or LOA approval and use of HUD to DH. SA Cat II: Reduced lighting: Requires specific OPSPEC, MSPEC, or LOA approval and use of Autoland or HUD to touchdown.</p>	<p>MALSR</p>	<p>MISSED APPROACH: Climb to 1200 then climbing right turn to 2400 direct GU VORTAC and hold.</p>
--	--------------	---

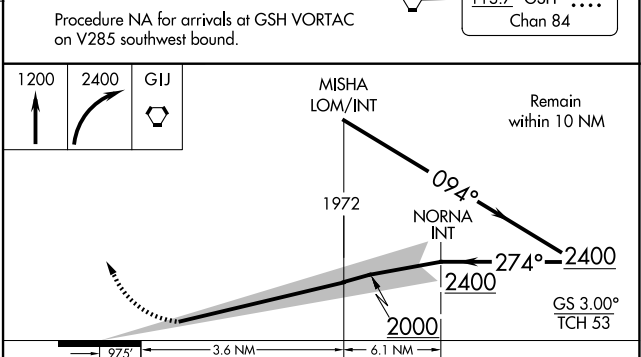
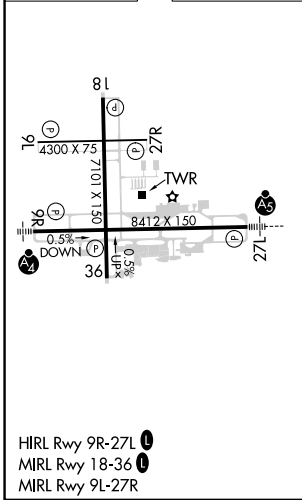
ATIS <b>120.675</b>	SOUTH BEND APP CON* <b>118.55 257.8</b>	SOUTH BEND TOWER* <b>135.675 (CTAF) 0 257.8</b>	GND CON <b>121.7</b>	CLNC DEL <b>121.9</b>
------------------------	--	--	-------------------------	--------------------------



EC-2, 15 MAY 2025 to 12 JUN 2025

EC-2, 15 MAY 2025 to 12 JUN 2025

ELEV 798	<b>D</b>	TDZE 774
----------	----------	----------



CATEGORY	A	B	C	D
S-ILS 27L	SA CAT I	RA 179/14	150 DA 924	
S-ILS 27L	SA CAT II	RA 114/12	100 DA 874	

**SA CATEGORY I & II ILS SPECIAL AIRCREW & AIRCRAFT CERTIFICATION REQUIRED**