

VORTAC FSD <b>115.0</b> Chan <b>97</b>	APP CRS <b>147°</b>	Rwy Idg <b>8000</b> TDZE <b>1429</b> Apt Elev <b>1430</b>
--	------------------------	---

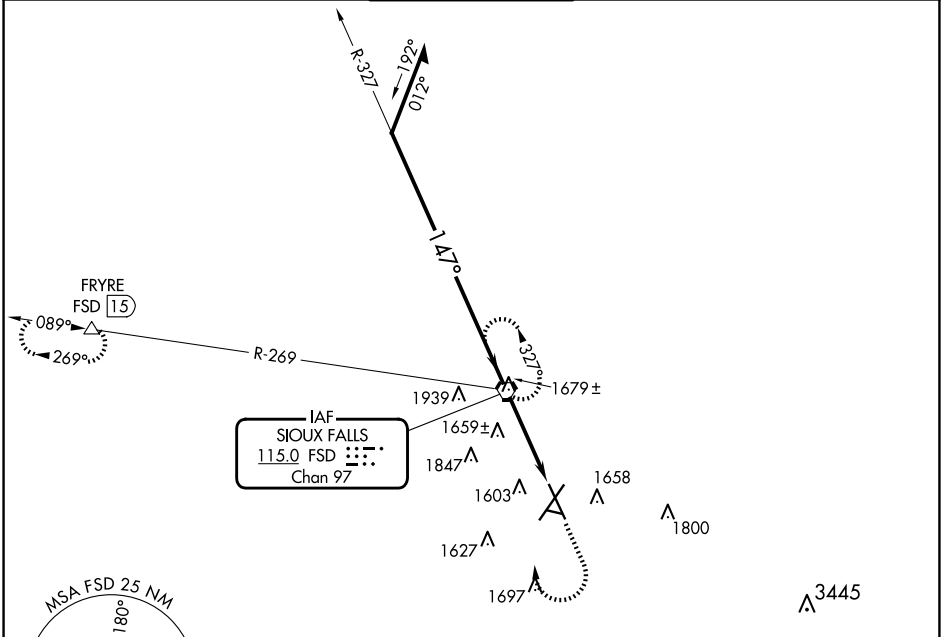
# VOR or TACAN RWY 15

JOE FOSS FLD (FSD)

**▲** Rwy 15 helicopter visibility reduction below ¼ SM NA.  
**ASR** -31°C

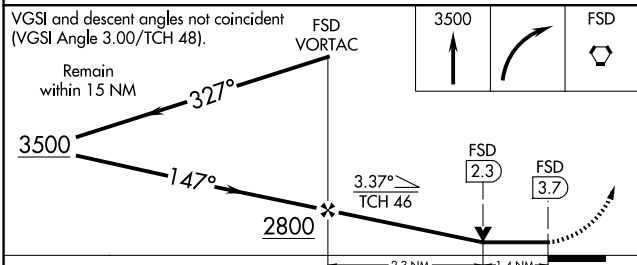
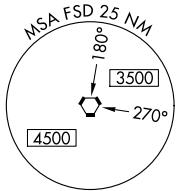
**MISSED APPROACH:** Climb to 3500 then right turn direct FSD VORTAC and hold. (TACAN aircraft continue climb to 5000 via FSD R-269 to FRYRE 15 DME and hold west, right turns, 089° inbound)

ATIS <b>126.6</b>	SIoux FALLS APP CON* <b>125.8 284.725</b>	SIoux FALLS TOWER* <b>118.3(CTAF) 257.8</b>	GND CON <b>121.9 348.6</b>	UNICOM <b>122.95</b>
----------------------	--	--	-------------------------------	-------------------------



NC-1, 15 MAY 2025 to 12 JUN 2025

NC-1, 15 MAY 2025 to 12 JUN 2025



ELEV 1430 TDZE 1429

**TDZ/CL Rwy 21**  
**REIL Rwys 15 and 33**  
**MIRL Rwy 9-27**  
**HIRL Rwys 3-21 and 15-33**

FAF to MAP 3.7 NM

Knots	60	90	120	150	180
Min:Sec	3:42	2:28	1:51	1:29	1:14

CATEGORY	A	B	C	D	E
S-15	1920-1	491 (500-1)	1920-1 3/8	491 (500-1 3/8)	
CIRCLING	1960-1 530 (600-1)	1980-1 550 (600-1)	2060-1 3/4 630 (700-1 3/4)	2200-2 1/2 770 (800-2 1/2)	2300-3 870 (900-3)