

APP CRS 272°	Rwy Idg 3151
	TDZE 1424
	Apt Elev 1430

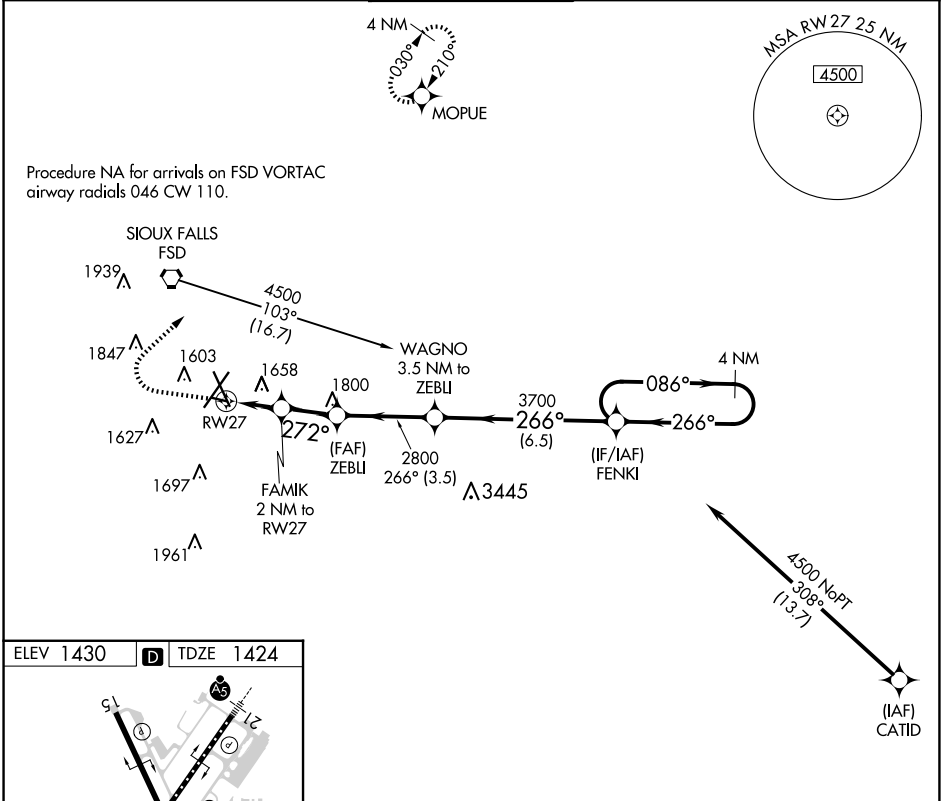
RNAV (GPS) RWY 27

JOE FOSS FLD (FSD)

RNP APCH.
 ASR Rwy 27 helicopter visibility reduction below 3/4 SM NA.
 -31°C

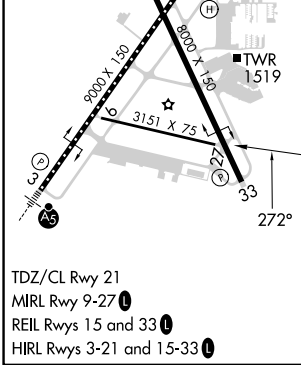
MISSED APPROACH: Climb to 2500, then climbing right turn to 4000 direct MOPIUE WP and hold.

ATIS 126.6	SIoux FALLS APP CON* 125.8 284.725	SIoux FALLS TOWER* 118.3 (CTAF) 257.8	GND CON 121.9 348.6	UNICOM 122.95
----------------------	--	---	-------------------------------	-------------------------



NC-1, 15 MAY 2025 to 12 JUN 2025

NC-1, 15 MAY 2025 to 12 JUN 2025



	2500	4000	MOPIUE			
	↑	↪	✦			
	FAMIK 2 NM to RW27		ZEBLI	WAGNO 3.5 NM to ZEBLI	FENKI	4 NM Holding Pattern
	RW27	TCH 40	2800	3700	4500	
	272°	3.15°	266°	086°	266°	
	2 NM	2 NM	3.5 NM	6.5 NM		
CATEGORY	A	B	C	D		
LNAV MDA	1960-1	536 (600-1)		NA		
CIRCLING	1960-1	1980-1		NA		
	530 (600-1)	550 (600-1)				