

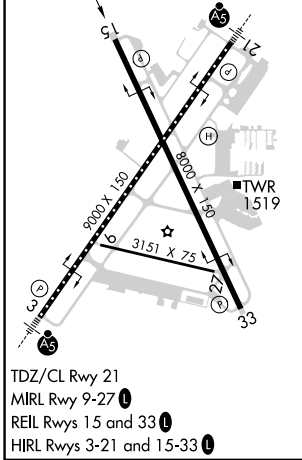
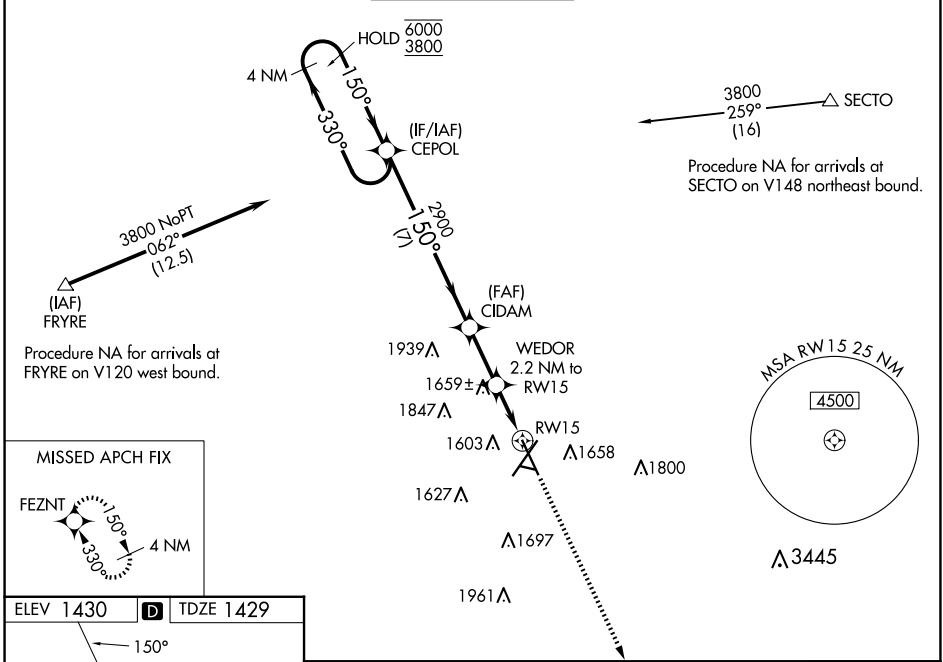
WAAS CH 90235	APP CRS 150°	Rwy Idg TDZE Apt Elev	8000 1429 1430
-------------------------	------------------------	-----------------------------	---

RNAV (GPS) RWY 15

JOE FOSS FLD (FSD)

RNP APCH-GPS.		MISSED APPROACH: Climb to 3800 direct FEZNT and hold.	
<p>ASR -31°C</p> <p>Rwy 15 helicopter visibility reduction below 3/4 SM NA. For uncompensated Baro-VNAV systems, LNAV/VNAV NA below -21°C or above 54°C.</p>			

ATIS 126.6	SIoux FALLS APP CON * 125.8 284.725	SIoux FALLS TOWER * 118.3 (CTAF) 257.8	GND CON 121.9 348.6	UNICOM 122.95
----------------------	---	--	-------------------------------	-------------------------



ELEV 1430	TDZE 1429				
<p>4 NM Holding Pattern</p> <p>6000 ← 330°</p> <p>3800 → 150°</p>		<p>CEPOL</p> <p>4 NM</p>		<p>CIDAM</p> <p>2900</p>	
<p>GP 3.00°</p> <p>TCH 48</p>		<p>WEDOR</p> <p>2.2 NM to RW15</p>		<p>3800</p> <p>FEZNT</p>	
		<p>7 NM</p>		<p>2900</p> <p>2160</p>	
		<p>2.3 NM</p>		<p>1.4 NM to RW15</p> <p>1.4 NM</p>	
CATEGORY	A	B	C	D	
LPV DA	1839-1 1/8		410 (500-1 1/8)		
LNAV/VNAV DA	1909-1 3/8		480 (500-1 3/8)		
LNAV MDA	1920-1 491 (500-1)		1920-1 3/8		491 (500-1 3/8)
CIRCLING	1960-1	1980-1	2060-1 3/4		2200-2 1/2
	530 (600-1)	550 (600-1)	630 (700-1 3/4)		770 (800-2 1/2)

NC-1, 15 MAY 2025 to 12 JUN 2025

NC-1, 15 MAY 2025 to 12 JUN 2025