

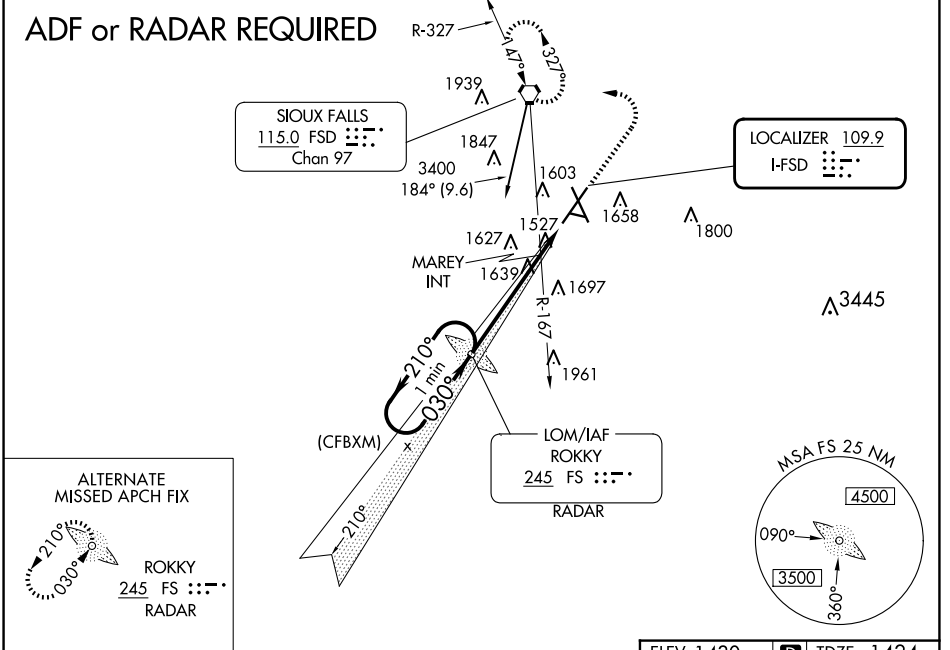
LOC I-FSD 109.9	APP CRS 030°	Rwy Idg TDZE Apt Elev	8999 1424 1430
---------------------------	------------------------	-----------------------------	---

ILS or LOC RWY 3

JOE FOSS FLD (FSD)

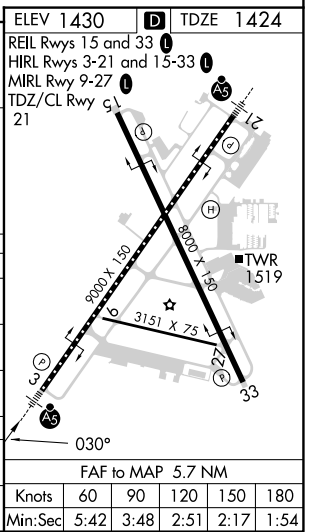
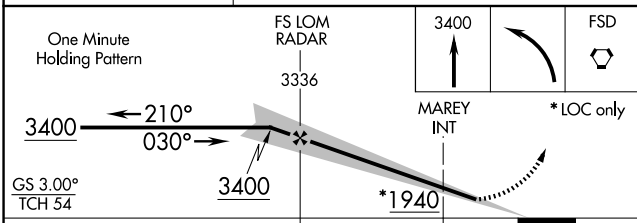
 -31°C	MALS R 	MISSED APPROACH: Climb to 3400 then left turn direct FSD VORTAC and hold.
---------------	------------	---

ATIS 126.6	SIoux FALLS APP CON * 125.8 284.725	SIoux FALLS TOWER * 118.3 (CTAF) 0 257.8	GND CON 121.9 348.6	UNICOM 122.95
----------------------	---	--	-------------------------------	-------------------------



ALTERNATE MISSED APCH FIX

ROKKY 245 FS RADAR



CATEGORY	A	B	C	D
S-ILS 3	1674/24 250 (300-½)			
S-LOC 3	1940/24	516 (600-½)	1940/55	516 (600-1)
CIRCLING	1960-1 530 (600-1)	1980-1 550 (600-1)	2060-1¾ 630 (700-1¾)	2200-2½ 770 (800-2½)
MAREY FIX MINIMUMS (DUAL VOR RECEIVERS REQUIRED)				
S-LOC 3	1800/24	376 (400-½)	1800/35	376 (400-5/8)
CIRCLING	1960-1 530 (600-1)	1980-1 550 (600-1)	2060-1¾ 630 (700-1¾)	2200-2½ 770 (800-2½)

NC-1, 15 MAY 2025 to 12 JUN 2025

NC-1, 15 MAY 2025 to 12 JUN 2025