

SIoux FALLS, SOUTH DAKOTA

HI-ILS or LOC RWY 3

LOC I-FSD 109.9	APCH CRS 030°	Rwy Idg 8999 TDZE 1424 Arpt Elev 1430
---------------------------	-------------------------	--

AL-396 [USAF]

JOE FOSS FLD (KFSD)

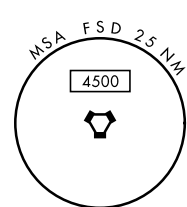
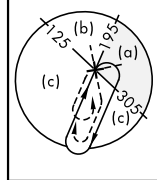
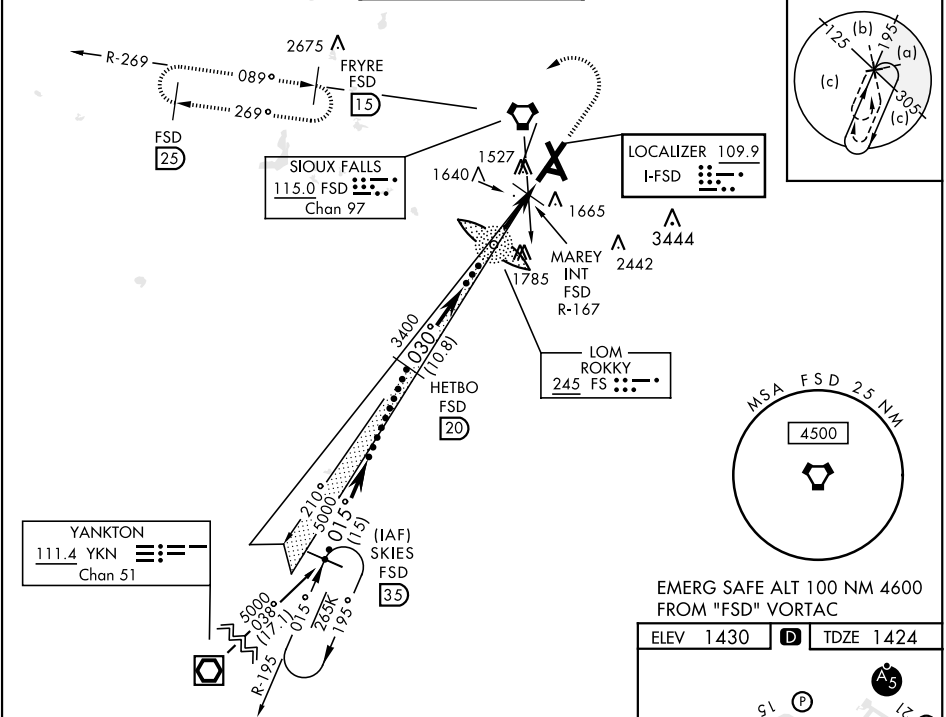
DME required.



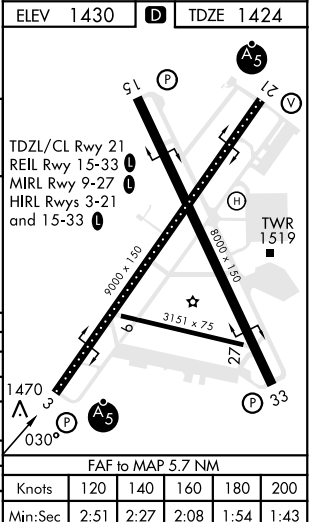
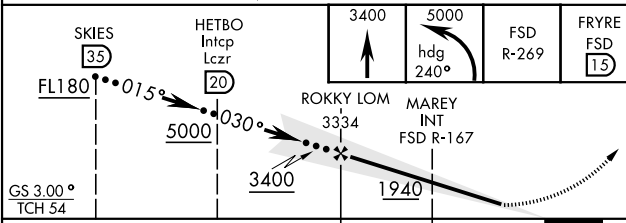
MISSED APPROACH: Climb to 3400, then climbing left turn to 5000 on heading 240° and FSD VORTAC R-269 to FRYRE (FSD 15 DME) and hold.

▼ * When ALS inop, increase CAT CDE RVR to 40, vis to ¼ mile.
 ** When ALS inop, increase CAT CDE vis to 1 ½ mile.
 *** When ALS inop, increase CAT CDE RVR to 55, vis to 1 mile.

ATIS 126.6	SIoux FALLS APP CON 125.8 306.2	SIoux FALLS TOWER ★ 118.3(CTAF) 257.8	GND CON 121.9 348.6	ASR
----------------------	---	---	-------------------------------	-----



EMERG SAFE ALT 100 NM 4600 FROM "FSD" VORTAC



CATEGORY	C	D	E
S-ILS 3*	1674/24	250	(300-1/2)
S-LOC 3**	1940/55 516 (600-1)	1940/60 516 (600-1 1/2)	
CIRCLING	2060-1 3/4 630 (700-1 3/4)	2200-2 1/2 770 (800-2 1/2)	2300-3 870 (900-3)
MAREY FIX MINIMA			
S-LOC 3***	1780/30 356 (400-3/4)	1780/40 356 (400-3/4)	2300-3 870 (900-3)
CIRCLING	2060-1 3/4 630 (700-1 3/4)	2200-2 1/2 770 (800-2 1/2)	2300-3 870 (900-3)

SIoux FALLS, SOUTH DAKOTA

43°35'N-96°45'W

JOE FOSS FLD (KFSD)

Amdt 9B 04NOV21

HI-ILS or LOC RWY 3

NC-1, 15 MAY 2025 to 12 JUN 2025

NC-1, 15 MAY 2025 to 12 JUN 2025