

WAAS CH <b>61238</b> <b>W36A</b>	APP CRS <b>358°</b>	Rwy Idg TDZE Apt Elev	<b>6400</b> <b>1097</b> <b>1098</b>
--	------------------------	-----------------------------	---

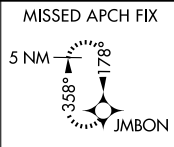
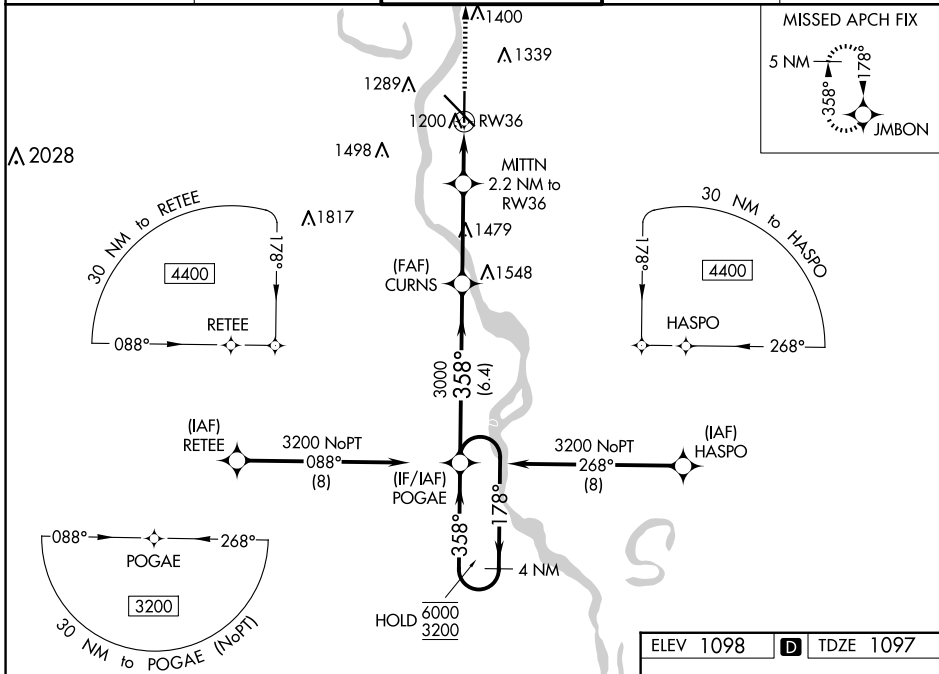
# RNAV (GPS) RWY 36

SIoux GATEWAY/BRIG GENERAL BUD DAY FLD (SUx)

RNP APCH.  
 ⚠ For uncompensated Baro-VNAV systems, LNAV/VNAV NA below -20°C or above 54°C.

MISSED APPROACH: Climb to 4400 direct JMBON and hold, continue climb-in-hold to 4400.

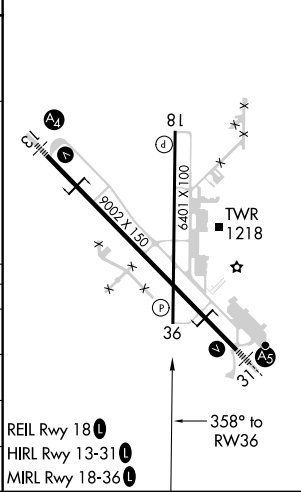
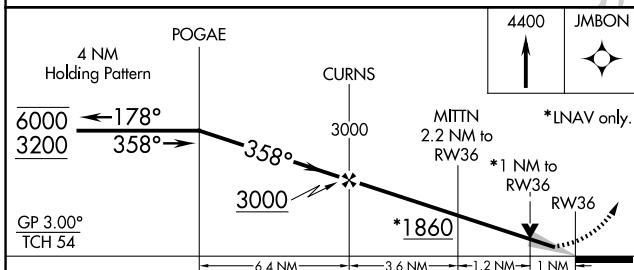
ATIS <b>119.45 270.8</b>	SIoux CITY APP CON * <b>124.6 307.0</b>	SIoux CITY TOWER * <b>118.7 (CTAF) 0 254.3</b>	GND CON <b>121.9 348.6</b>	UNICOM <b>122.95</b>
-----------------------------	--	---	-------------------------------	-------------------------



NC-3, 15 MAY 2025 to 12 JUN 2025

NC-3, 15 MAY 2025 to 12 JUN 2025

ELEV 1098	<b>D</b> TDZE 1097
-----------	--------------------



CATEGORY	A	B	C	D
LPV DA		1297-3/4	200 (200-3/4)	
LNAV/VNAV DA		1361-7/8	264 (300-7/8)	
LNAV MDA		1460-1	363 (400-1)	
<b>C</b> CIRCLING	1640-1 542 (600-1)	1700-1 602 (700-1)	1700-1 3/4 602 (700-1 3/4)	1860-2 1/2 762 (800-2 1/2)

REIL Rwy 18  
 HIRL Rwy 13-31  
 MIRL Rwy 18-36