

# VOR/DME Y RWY 33

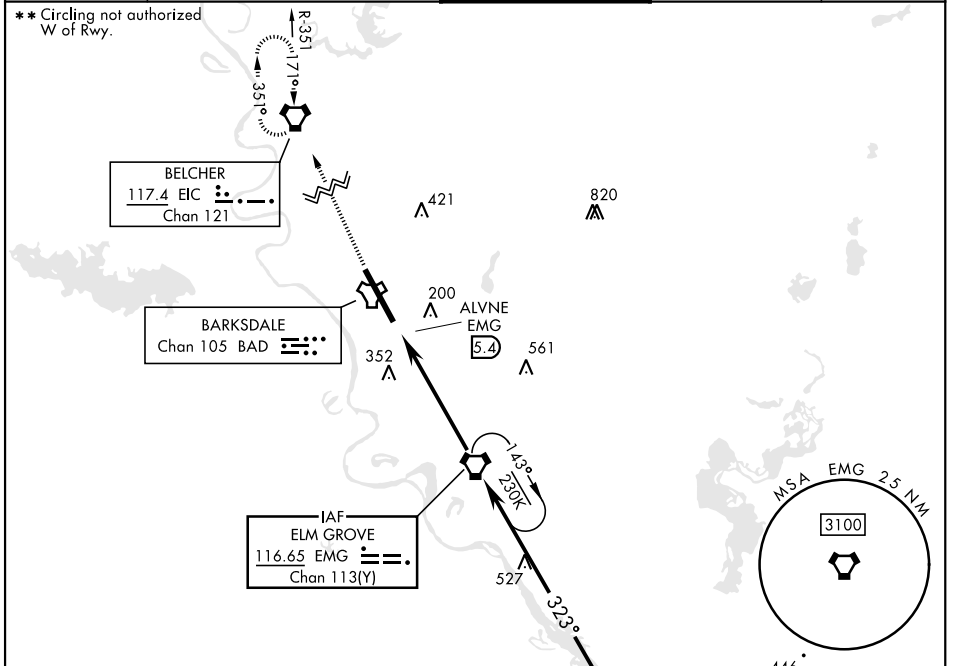
VORTAC EMG <b>116.65</b> Chan <b>113(Y)</b>	APCH CRS <b>323°</b>	Rwy Idg <b>11,758</b> THRE <b>161</b> Arprt Elev <b>165</b>
---	-------------------------	---

[USAF]

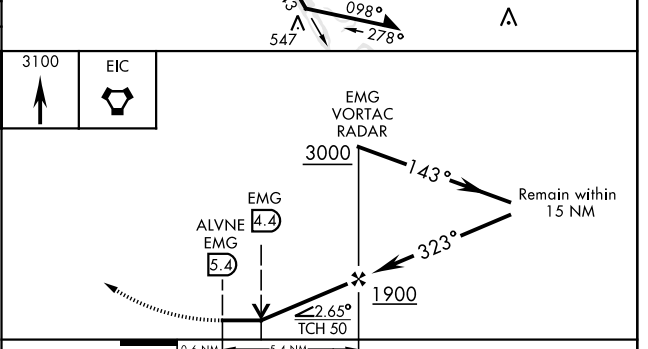
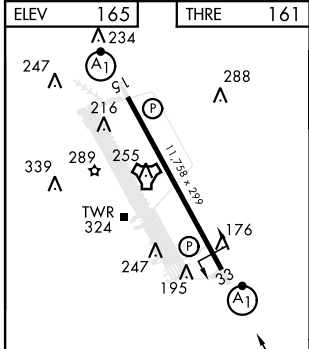
BARKSDALE AFB (KBAD)

DME or RADAR required.	ALSF-1 <b>(A1)</b>	MISSED APPROACH: Climb to 3100 direct EIC VORTAC and hold.
------------------------	-----------------------	--

ATIS <b>307.025</b>	SHREVEPORT APP CON <b>123.75 360.725</b> (320°-152°) <b>119.9 335.55</b> (153°-319°)	TOWER ★ <b>128.25 278.3</b>	GND CON <b>121.8 253.5</b>	ASR
------------------------	--	--------------------------------	-------------------------------	-----



EMERG SAFE ALT 100 NM 3300



HIRL Rwy 15-33	323°	3100	EIC	EMG VORTAC RADAR	3000	143°	323°	1900	Remain within 15 NM
FAF to MAP 5.4 NM				EMG	4.4			2.65°	TCH 50
		0.6 NM		ALVNE EMG	5.4				
Knots	60	90	120	150	180				
Min:Sec	5:24	3:36	2:42	2:10	1:48				
CIRCLING **	NOT AUTHORIZED					760-2		780-2¼	
						595 (600-2)		615 (700-2¼)	

# VOR/DME Y RWY 33

SC-4, 15 MAY 2025 to 12 JUN 2025

SC-4, 15 MAY 2025 to 12 JUN 2025