

TACAN Y RWY 15

TACAN BAD Chan 105	APCH CRS 158°	Rwy Idg 11,758 THRE 163 Arprt Elev 165
------------------------------	-------------------------	-------------------------------------------------------------------

[USAF]

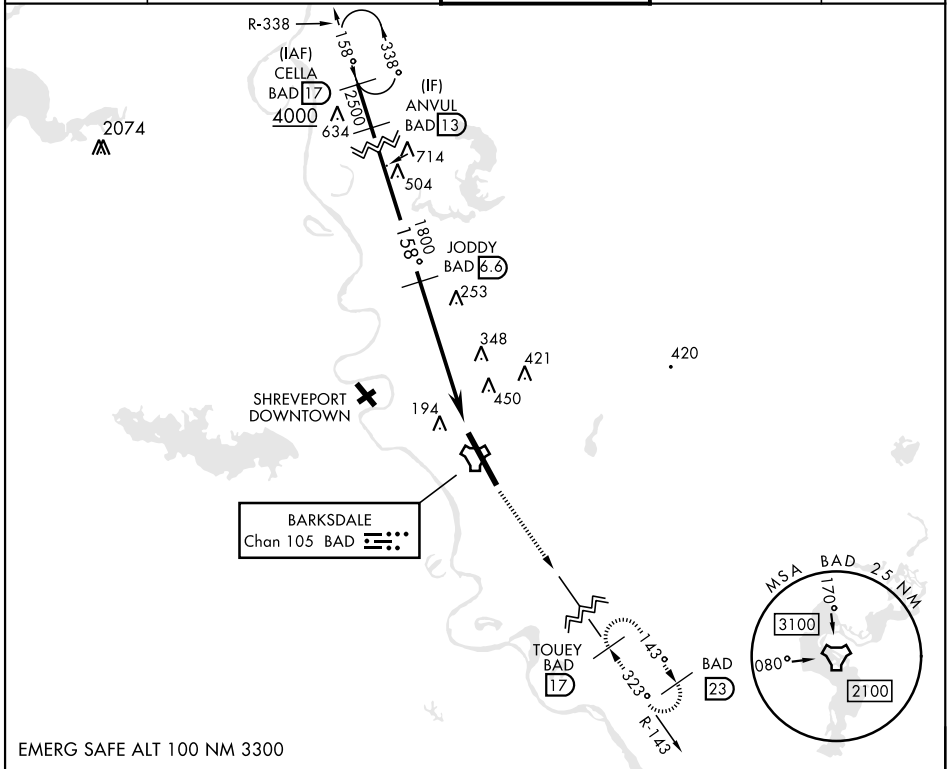
BARKSDALE AFB (KBAD)

* When ALS inop, increase CAT AB RVR to 55 and vis to 1 mile
CAT CDE vis to 1 3/4 miles.
** Circling not authorized W of Rwy.



MISSED APPROACH: Climb to 3000 via
BAD R-143 direct TOUEY and hold.

ATIS 307.025	SHREVEPORT APP CON 320°-152° 123.75 360.725 153°-319° 119.9 335.55	TOWER * 128.25 278.3	GND CON 121.8 253.5	ASR
------------------------	----------------------------------------------------------------------------------------	--------------------------------	-------------------------------	-----



EMERG SAFE ALT 100 NM 3300

CELLA R-338 BAD 17	ANVUL BAD 13	JODDY BAD 6.6	TACAN HAXOG BAD 1.4	TOUEY BAD R-143 BAD 17	ELEV 165	THRE 163
CATEGORY	A	B	C	D	E	
S-15 *	800/24	637 (700-1/2)	800-1 3/8	637 (700-1 3/8)		
CIRCLING **	NOT AUTHORIZED			800-2 635 (700-2)	800-2 1/4 635 (700-2 1/4)	HIRL Rwy 15-33

TACAN Y RWY 15

SC-4, 15 MAY 2025 to 12 JUN 2025

SC-4, 15 MAY 2025 to 12 JUN 2025