

VORTAC EMG 116.65 Chan 113(Y)	APCH CRS 323°	Rwy Idg 11,758 THRE 161 Arpt Elev 165	[USAF]	BARKSDALE AFB (KBAD)
---	-------------------------	--	--------	----------------------

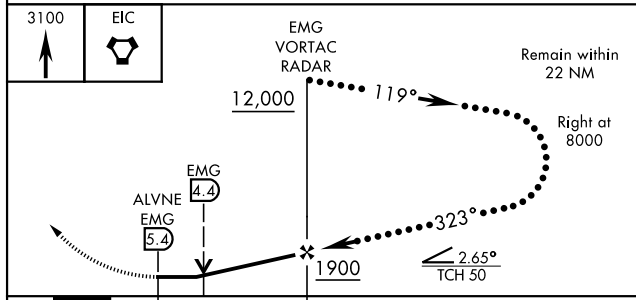
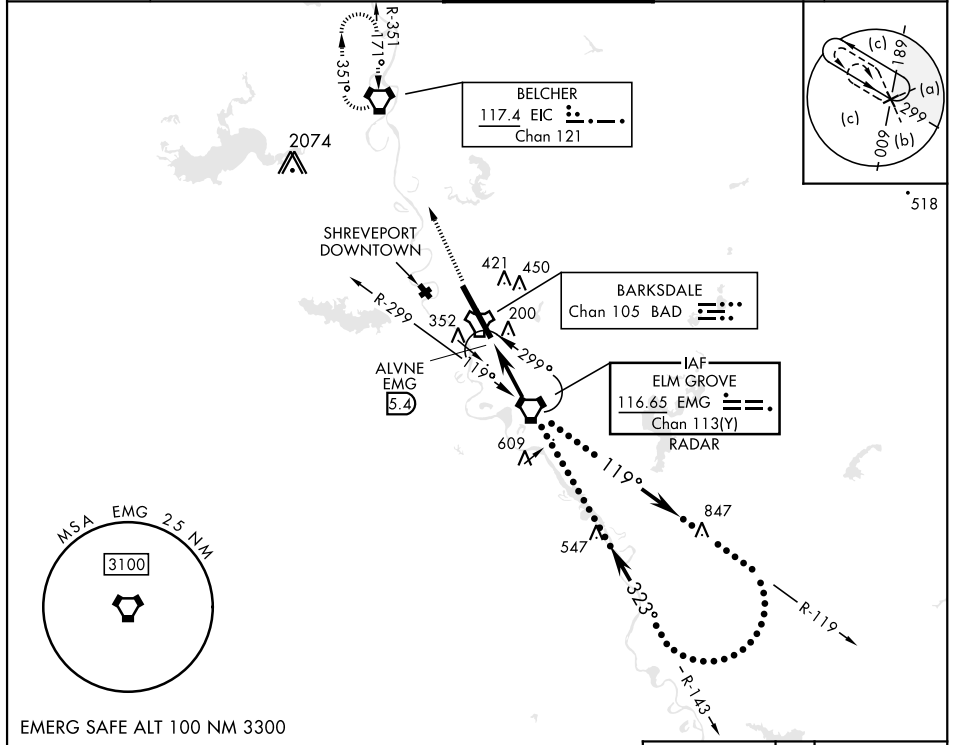
DME or RADAR required.

* When ALS inop, increase CAT CDE vis to 1 $\frac{3}{8}$ miles.
** Circling not authorized W of Rwy.

ALSF-1
A1

MISSED APPROACH: Climb to 3100 direct to EIC VORTAC and hold.

ATIS 307.025	SHREVEPORT APP CON 320°-152° 123.75 360.725 153°-319° 119.9 335.55	TOWER★ 128.25 278.3	GND CON 121.8 253.5	ASR
------------------------	--	-------------------------------	-------------------------------	-----



ELEV	165	THRE	161		
HIRL Rwy 15-33					
FAF to MAP 5.4 NM					
Knots	120	140	160	180	200
Min:Sec	2:42	2:19	2:01	1:48	1:37

CATEGORY	C	D	E
S-33*	640/50	479 (500-1)	
CIRCLING**	NOT AUTHORIZED	760-2 595 (600-2)	780-2 $\frac{1}{4}$ 615 (700-2 $\frac{1}{4}$)

SC-4, 15 MAY 2025 to 12 JUN 2025

SC-4, 15 MAY 2025 to 12 JUN 2025