

HI-TACAN Z RWY 33

TACAN BAD Chan 105	APCH CRS 323°	Rwy ldg 11,758 THRE 161 Arprt Elev 165
------------------------------	-------------------------	---

[USAF]

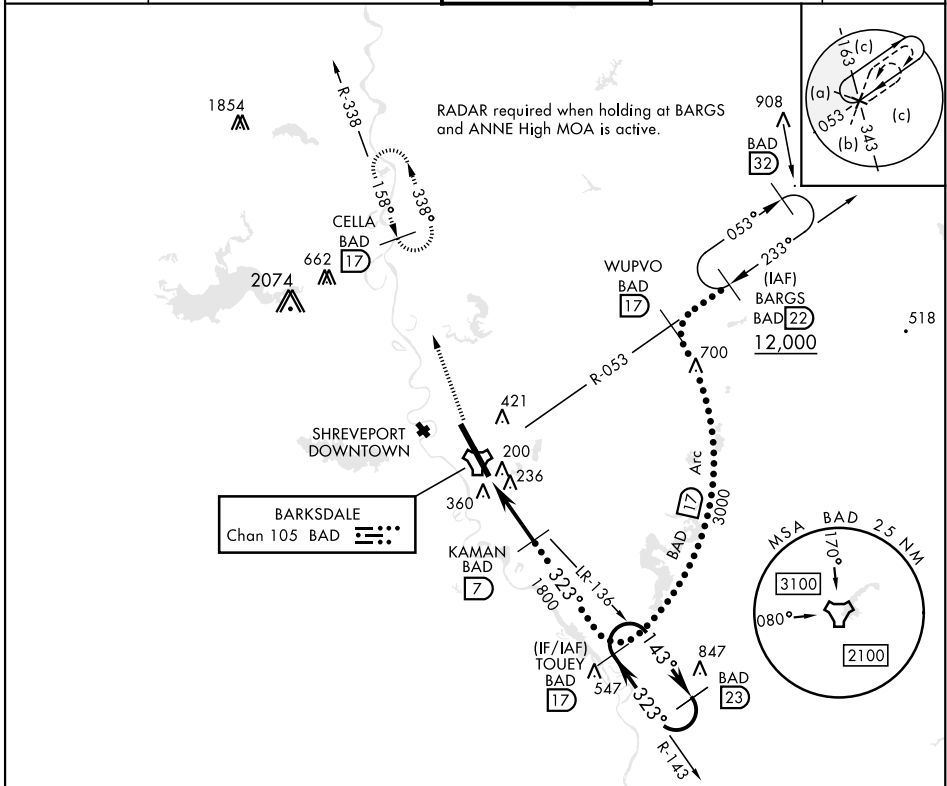
BARKSDALE AFB (KBAD)

* When ALS inop, increase CAT CDE vis to 1½ miles.
** Circling not authorized W of Rwy.



MISSED APPROACH: Climb to 4000 via BAD R-338 direct CELLA and hold.

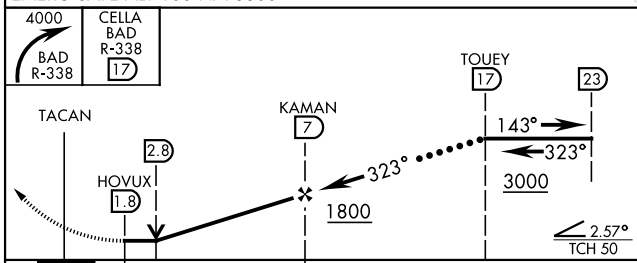
ATIS 307.025	SHREVEPORT APP CON 320°-152° 123.75 360.725 153°-319° 119.9 335.55	TOWER★ 128.25 278.3	GND CON 121.8 253.5	ASR
------------------------	--	-------------------------------	-------------------------------	-----



SC-4, 15 MAY 2025 to 12 JUN 2025

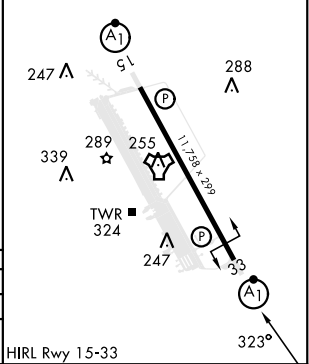
SC-4, 15 MAY 2025 to 12 JUN 2025

EMERG SAFE ALT 100 NM 3300



ELEV	165	THRE	161
------	-----	------	-----

CATEGORY	C	D	E
S-33*	640/50	479	(500-1)
CIRCLING**	NOT AUTHORIZED	760-2 595 (600-2)	780-2¼ 615 (700-2¼)



HI-TACAN Z RWY 33