

LOC I-BAD 109.9	APCH CRS 329°	Rwy Idg 11,758
		THRE 161
		Arprt Elev 165

[USAF]

BARKSDALE AFB (KBAD)

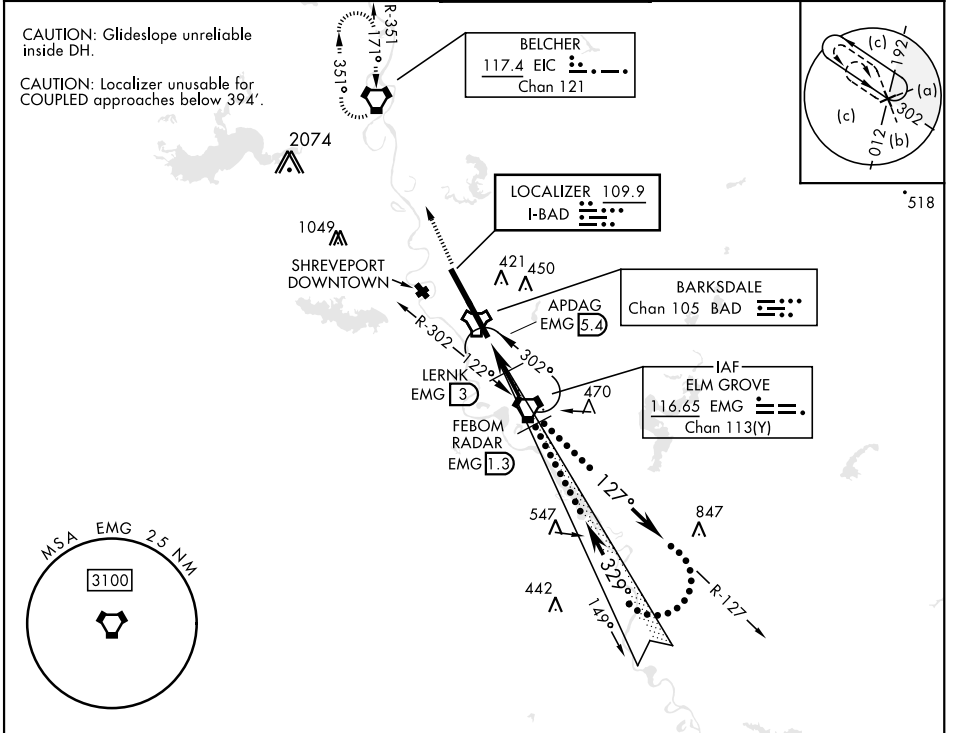
DME or RADAR required



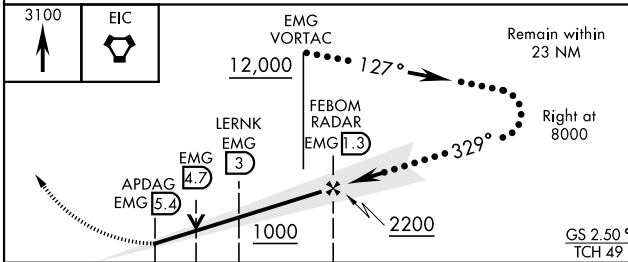
MISSED APPROACH: Climb to 3100 direct to EIC VORTAC and hold.

* When ALS inop, increase CAT CDE RVR to 40 and vis to 3/4 mile.
 ** When ALS inop, increase CAT CDE RVR to 60 and vis to 1 1/8 miles.
 *** Circling not authorized W of Rwy.

ATIS 307.025	SHREVEPORT APP CON 320°-152° 123.75 360.725 153°-319° 119.9 335.55	TOWER ★ 128.25 278.3	GND CON 121.8 253.5	ASR
------------------------	--	--------------------------------	-------------------------------	-----



EMERG SAFE ALT 100 NM 3300



ELEV	165	THRE	161
HIRL Rwy 15-33 329°			
FAF to MAP 6.7 NM			
Knots	120	140	160 180 200
Min:Sec	3:21	2:52	2:31 2:14 2:01

CATEGORY	C	D	E
S-ILS 33*		361/24	200 (200-1/2)
S-LOC 33**		560/35	399 (400-3/4)
CIRCLING ***	NOT AUTHORIZED	760-2 595 (600-2)	780-2 1/4 615 (700-2 1/4)

SC-4, 15 MAY 2025 to 12 JUN 2025

SC-4, 15 MAY 2025 to 12 JUN 2025