

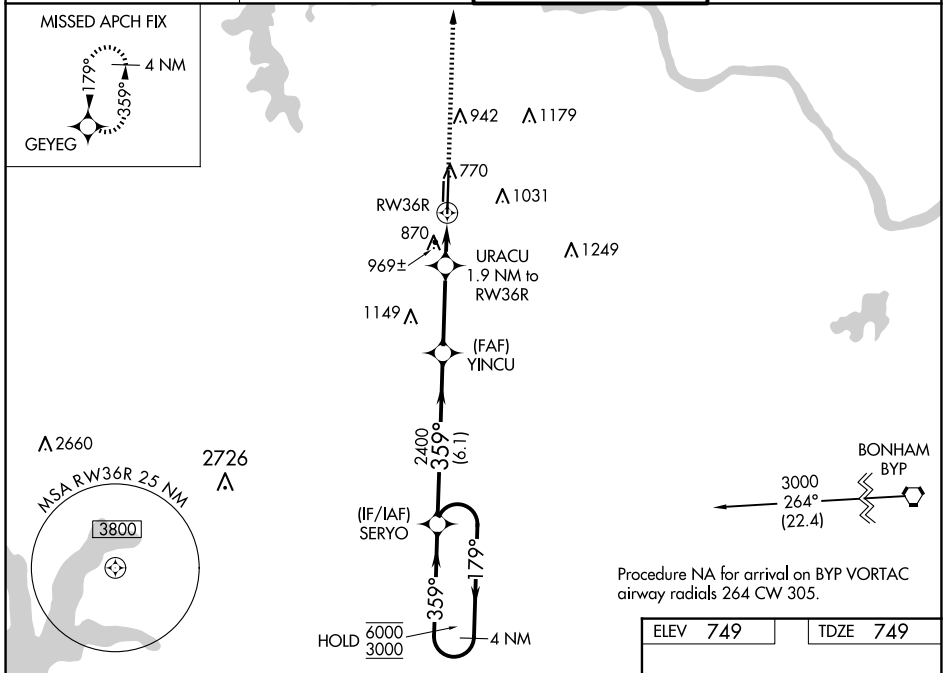
WAAS CH <b>65928</b> <b>W36A</b>	APP CRS <b>359°</b>	Rwy Idg TDZE <b>749</b> Apt Elev <b>749</b>	<b>9000</b>
--	------------------------	---	-------------

# RNAV (GPS) RWY 36R

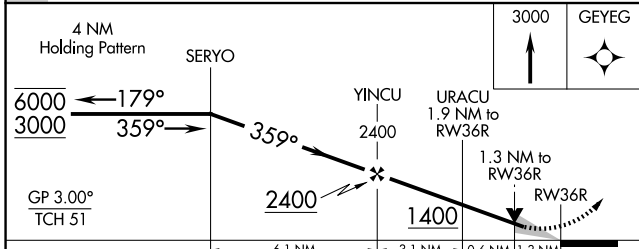
NORTH TEXAS RGNL/PERRIN FLD (GYI)

RNP APCH - GPS.		MALS	MISSED APPROACH: Climb to 3000 direct GEYEG and hold.
<p>▼ Circling Rwy 18R, 36L NA at night. Inop table does not apply to LPV.</p> <p>▲ For uncompensated Baro-VNAV systems, LNAV/VNAV NA below -10°C or above 54°C.</p>			

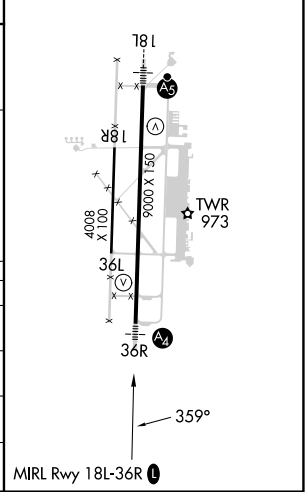
ATIS <b>118.775</b>	FORT WORTH CENTER <b>124.75 323.0</b>	NORTH TEXAS TOWER ★ <b>120.575 (CTAF) 0 233.7</b>	GND CON <b>124.125</b>
------------------------	--	--	---------------------------



Procedure NA for arrival on BYP VORTAC  
airway radials 264 CW 305.



ELEV 749	TDZE 749
----------	----------



CATEGORY	A	B	C	D
LPV DA	949-3/4 200 (200-3/4)			
LNAV/VNAV DA	1220-13/8 471 (500-13/8)			
LNAV MDA	1220-3/4	471 (500-3/4)	1220-11/8	471 (500-11/8)
<b>C</b> CIRCLING	1300-1	551 (600-1)	1400-13/4 651 (700-13/4)	1540-21/2 791 (800-21/2)

SC-2, 15 MAY 2025 to 12 JUN 2025

SC-2, 15 MAY 2025 to 12 JUN 2025