

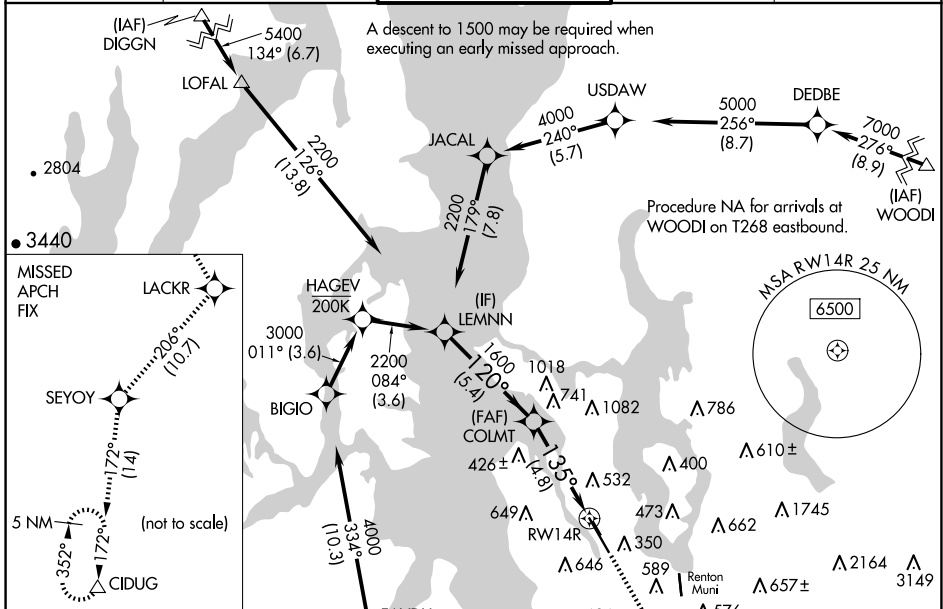
APP CRS	Rwy Idg	9120
135°	TDZE	18
	Apt Elev	22

RNAV (RNP) Z RWY 14R

BOEING FLD/KING COUNTY INTL (BFI)

RNP AR APCH - GPS.		MALSF 	MISSED APPROACH: Climb direct OCEZE, cross OCEZE at 1500, then climb to 5000 on the RNAV missed approach route to CIDUG and hold.
RADAR required for missed approach.			
<p>▼ For uncompensated Baro-VNAV systems, procedure NA below -6°C or above 54°C. For inop ALS, increase RNP 0.15 visibility to 1 3/8 SM.</p>			

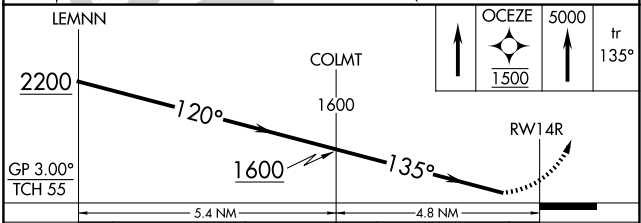
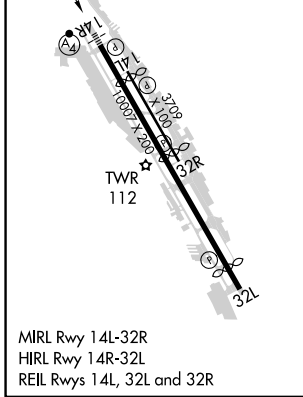
ATIS	SEATTLE APP CON	BOEING TOWER	GND CON	CLNC DEL
127.75	125.9 306.9	120.6 257.8	121.9	132.4



NW-1, 15 MAY 2025 to 12 JUN 2025

NW-1, 15 MAY 2025 to 12 JUN 2025

ELEV 22	D	TDZE 18
---------	----------	---------



CATEGORY	A	B	C	D
RNP 0.10 DA		448/50	430 (500-1)	
RNP 0.15 DA		522-1 1/4	504 (500-1 1/4)	
RNP 0.30 DA		708-1 3/4	690 (700-1 3/4)	

AUTHORIZATION REQUIRED